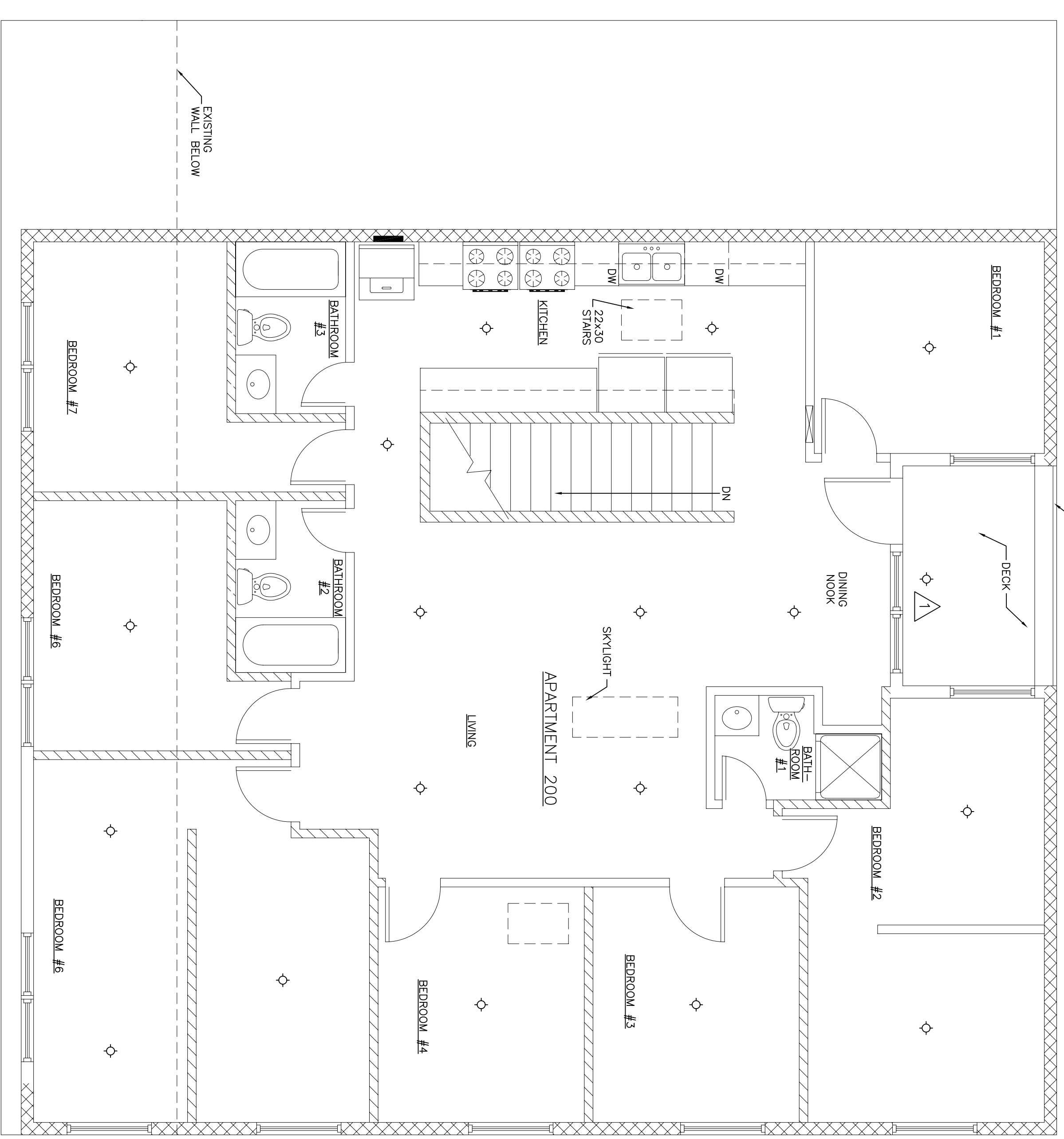


GROUND FLOOR PLAN - SPRINKLER
SCALE: 1/4" = 1'-0"



SECOND FLOOR PLAN - SPRINKLER
SCALE: 1/4" = 1'-0"

SPRINKLER NOTES:

01. NOTE: THE DRAWINGS ARE DIAGRAMMATIC AND INDICATE THE GENERAL ARRANGEMENT OF THE SPRINKLER SYSTEM AND EQUIPMENT. COMPLETE INSTALLATION AND DESIGN SHALL BE SUBMITTED TO THE CENTRE REGION CODE PRIOR TO INSTALLATION FOR THEIR APPROVAL.

02. SCOPE OF WORK

- A) FURNISH AND INSTALL A COMPLETE AND OPERATIONAL WET PIPE SPRINKLER SYSTEM AS INDICATED HEREIN AND DETAILED ON THE DRAWINGS.
- B) THE SCOPE OF FIRE PROTECTION WORK SHALL INCLUDE THE FURNISHING AND INSTALLATION OF ALL LABOR, MATERIALS, ROUGHEN AND SERVICES AND IN PERFORMING ALL OPERATIONS NECESSARY AND REASONABLY ANTICIPATED FOR THE COMPLETE INSTALLATION OF WET PIPE SPRINKLER SYSTEMS AS INDICATED ON THE DRAWINGS AND SPECIFIED HEREIN.
- C) THE SPRINKLER CONTRACTOR SHALL VERIFY ALL DIMENSIONS AND CONDITIONS AT THE SITE.
- D) ALL WORK SHALL BE IN STRICT ACCORDANCE WITH THE LATEST EDITION OR NFPA 13 AND ALL STATE AND LOCAL CODES AND REGULATIONS.

03. HYDRAULIC DESIGN INFORMATION

- A) OBTAIN THE MOST RECENT HYDRANT TEST FROM THE HYDRANT CLOSEST TO THE PROPOSED BUILDING.
- B) VERIFY HYDRANT TEST RESULTS WITH THE WATER AUTHORITY.
- C) HYDRAULICALLY DESIGN SYSTEM IN ACCORDANCE WITH NFPA 13, PRIOR TO STARTING CONSTRUCTION, SUBMIT HYDRAULIC CALCULATIONS AND SPRINKLER SHOP DRAWINGS TO THE ARCHITECT/ENGINEER AND CENTRE REGION CODE OFFICE.

04. PIPING - SPRINKLER PIPING INSIDE OF BUILDING - BLACK STEEL, SCHEDULE 40, 1 1/2" THROUGH 3" O.D. PIPE.

05. GATE VALVES - IRON BODY, BRONZE TRIM, RISING STEM, PRE-GROOVED FOR MOUNTING TAMPER SWITCH, OS&Y, "BLAZE MASTER"

06. CHECK VALVES - IRON BODY, BRONZE TRIM, SWING CHECK WITH RUBBER DISK, RENEWABLE DISC AND SEAT.

07. DRAIN VALVES - BRASS BALL VALVE WITH CAP AND CHAIN, 3/4" HOSE THREAD.

08. SPRINKLERS

- A) SUSPENDED CEILING AREAS - STANDARD PENDANT TYPE WITH CHROME PLATED FINISH AND MATCHING ESCUTCHEON.
- B) EXPOSED AREAS - STANDARD UPRIGHT TYPE WITH BRASS FINISH
- C) AREAS REQUIRING SIDEWALL DISCHARGE - STANDARD SIDEWALL TYPE WITH CHROME PLATED FINISH AND MATCHING ESCUTCHEON
- D) AREAS BETWEEN CEILING AND FLOOR - STANDARD UPRIGHT TYPE WITH BRASS FINISH.
- E) ATTIC - STANDARD UPRIGHT TYPE WITH CHROME PLATED FINISH.

09. SPRINKLER SYSTEM SPECIALTIES

- A) WET PIPE SPRINKLER VALVE - CHECK TYPE VALVE WITH ELECTRICALLY OR HYDRAULICALLY OPERATED ALARMS, WITH PRESSURE RETARD CHAMBER AND VARIABLE PRESSURE TRIM.
- B) WATER FLOW ALARM - ELECTRICALLY OPERATED TYPE ALARM GONG, RED ENAMELED.
- C) WATER FLOW SWITCH - VANE TYPE SWITCH WITH TWO CONTACTS.
- D) AUTOMATIC FIRE SUPPRESSION SYSTEMS SHALL BE MONITORED BY A CENTRAL STATION SYSTEM.
- E) DRY PIPE SPRINKLER VALVE - CHECK TYPE VALVE WITH ELECTRICALLY OR HYDRAULICALLY OPERATED ALARMS, WITH PRESSURE RETARD CHAMBER AND VARIABLE PRESSURE TRIM.

10. FIRE DEPARTMENT CONNECTION

- A) PROVIDE FLUSH MOUNTED WALL TYPE WITH BRASS FINISH.
- B) CONNECTION SHALL HAVE TWO OUTLETS WITH THREAD SIZE TO SUIT LOCAL FIRE DEPARTMENT HARDWARE, WITH THREADED DUST CAP AND CHAIN OF MATCHING MATERIAL AND FINISH.
- C) DRAIN - 3/4" AUTOMATIC DRIP TO OUTSIDE.
- D) LABEL - "SPRINKLER - FIRE DEPARTMENT CONNECTION".

11. GENERAL

- A) INSTALL ALL WORK IN STRICT ACCORDANCE WITH MANUFACTURER'S RECOMMENDATIONS AND NFPA 13, LATEST EDITION.
- B) PROVIDE SLEEVES WHERE PIPES PENETRATE FLOORS AND WALLS. SEAL PIPE AND SLEEVE PENETRATIONS TO MAINTAIN FIRE RESISTANCE EQUIVALENT TO FIRE SEPARATION REQUIRED.
- C) PROVIDE GATE VALVES FOR SHUTOFF OR ISOLATING SERVICE, WHERE APPROVED. USE BUTTERFLY VALVES INSTEAD OF GATE VALVES.
- D) PROVIDE SYSTEM VALVES AT MAIN SHUTOFF VALVES, LOW POINTS OF PIPING AND APPARATUS.
- E) CONNECT SYSTEM TO WATER SOURCE WITH DOUBLE CHECK DETECTOR CHECK ASSEMBLY.
- F) FLUSH ENTIRE PIPING SYSTEM OF FOREIGN MATTER.
- G) HYDROSTATICALLY TEST ENTIRE SYSTEM.

LEGEND



SPRINKLER HEAD