

GROUND FLOOR PLAN - ELECTRICAL
SCALE: 1/4" = 1'-0"

ADA COMPLIANCE STANDARDS:

OPERABLE PARTS:
LIGHTING CONTROLS, ELECTRICAL RECEPTACLES, ENVIRONMENTAL CONTROLS AND USER CONTROLS FOR SECURITY OR INTERCOM SYSTEMS, EXCEPT FOR THE FOLLOWING EXCEPTIONS:

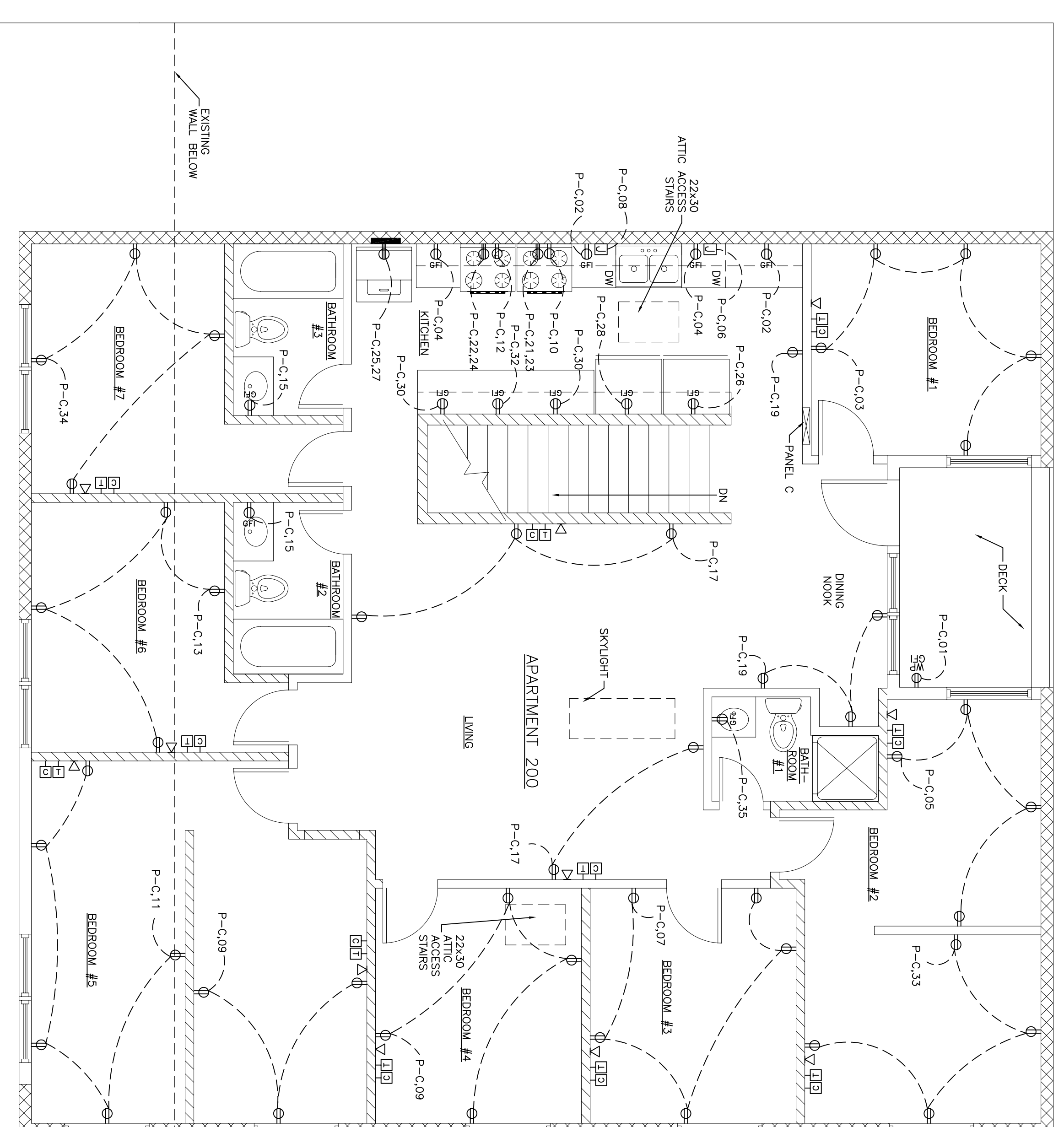
- 01. ELECTRICAL RECEPTACLES SERVING A DEDICATED USE
- 02. APPLIANCE MOUNTED CONTROLS OR SWITCHES
- 03. A SINGLE OUTLET WHERE ALL OF THE FOLLOWING CONDITIONS ARE NOT MET:
 - (a) THE OUTLET IS ABOVE A LENGTH OF COUNTERTOP THAT IS UNINTERRUPTED BY A SINK OR APPLIANCE; AND
 - (b) AT LEAST ONE RECEPTACLE IS PROVIDED FOR THAT LENGTH OF COUNTERTOP; AND
 - (c) ALL OTHER RECEPTACLES PROVIDED FOR THAT LENGTH OF COUNTERTOP COMPLY.
- 04. FLOOR ELECTRICAL RECEPTACLES.
- 05. PLUMBING FIXTURE CONTROLS.
- 06. HVAC DIFFUSERS.
- 07. CEILING FAN MOUNTED CONTROLS.

- SHALL COMPLY WITH THE FOLLOWING:
- 01. A PARALLEL, 30"x48" CLEAR FLOOR OR GROUND SPACE.
 - 02. THE FOLLOWING REACH RANGES:
 - (a) UNOBSTRUCTED SIDE REACH: 48" H. MAX.
 - (b) OBSTRUCTED SIDE REACH WITH 0" MAX. PROJECTION: 48" H. MAX.
 - (c) OBSTRUCTED SIDE REACH WITH 24" MAX. PROJECTION: 48" H. MAX.

THE FOLLOWING EXCEPTIONS APPLY:

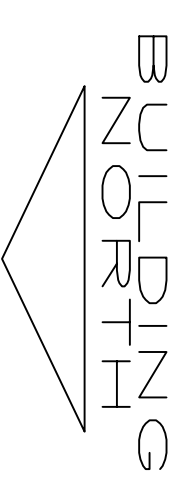
- 1. WHERE THE USE OF SPECIAL EQUIPMENT DICTATES OTHERWISE
- 2. WHERE ELECTRICAL AND COMMUNICATIONS SYSTEMS RECEPTACLES ARE NOT NORMALLY INTENDED FOR USE BY BUILDING OCCUPANTS.

NOTE:
ALL BEDROOM CIRCUITS TO BE PROTECTED BY FAULT BREAKERS

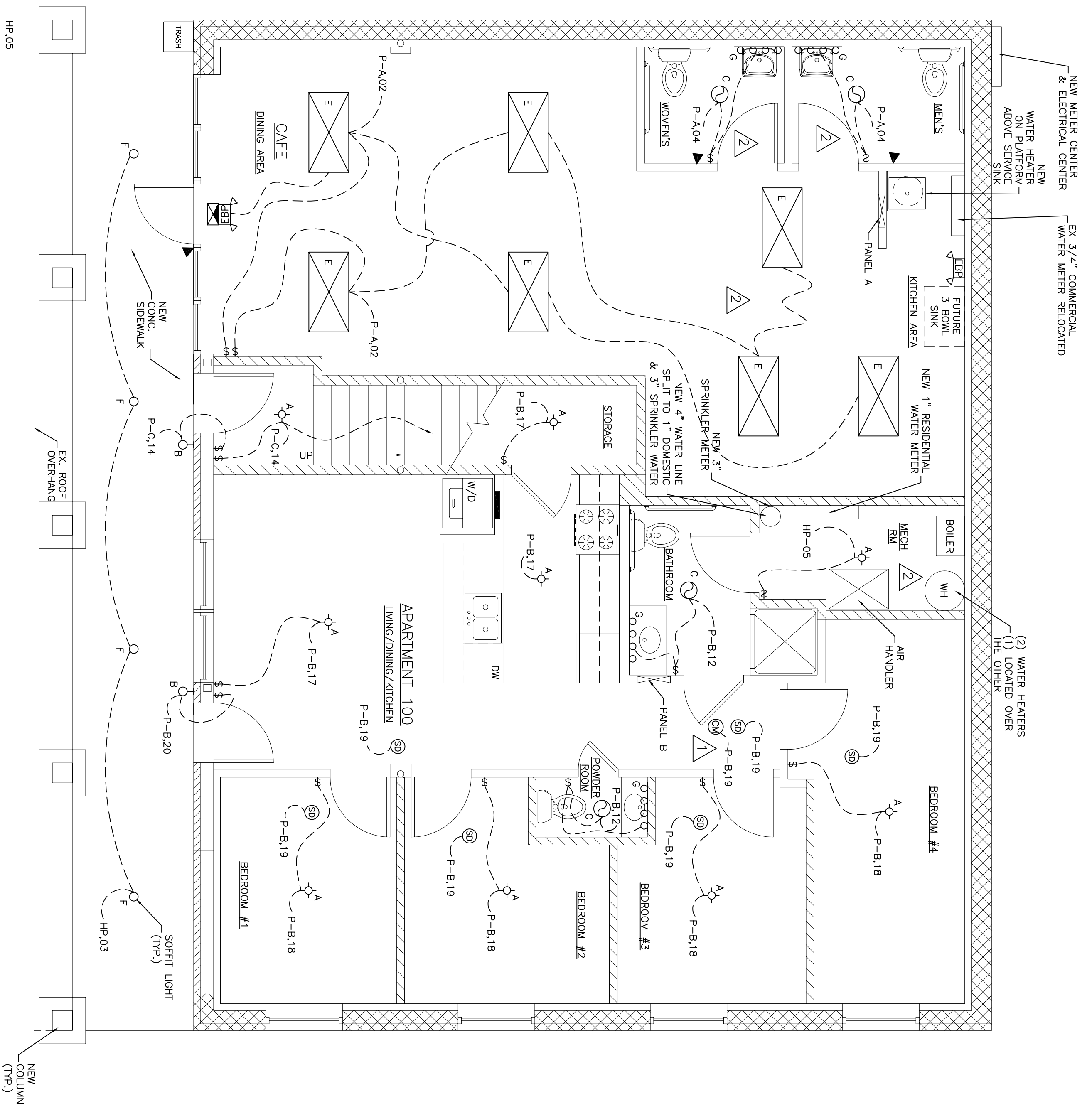


SECOND FLOOR PLAN - ELECTRICAL
SCALE: 1/4" = 1'-0"

LEGEND



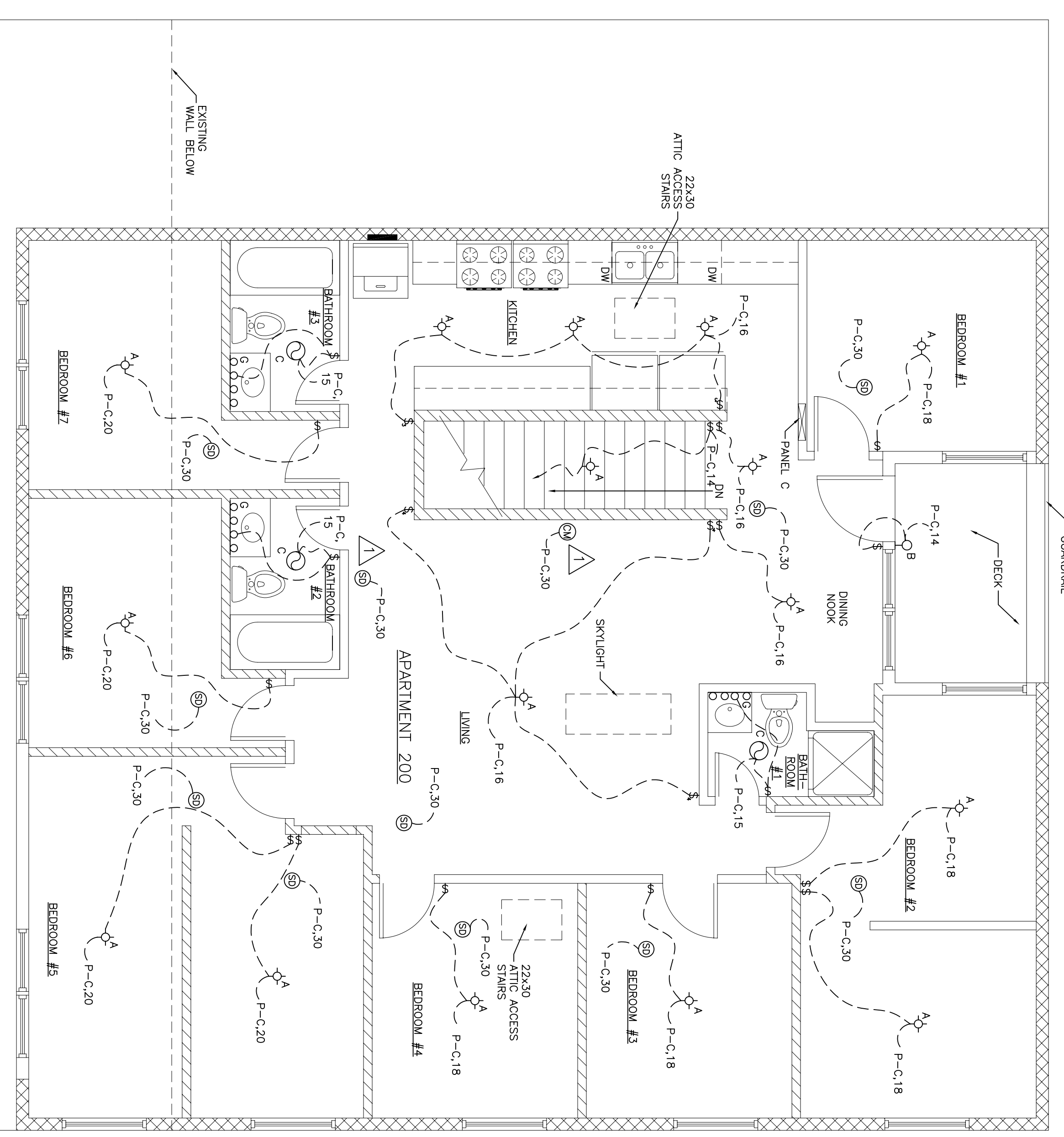
	1HR WALL
	1HR EXT. WALL
	DUPLEX RECEPTACLE (MOUNT 18" AFF)
	220V RECEPTACLE
	GROUND FAULT INTERRUPTING TYPE RECEPTACLE
	GROUND FAULT INTERRUPTING TYPE WATER PROOF RECEPTACLE, NEMA 3R ENCLOSURE
	CABLE JACK
	COMPUTER OUTLET (MOUNT OUTLET 18" AFF; STUB 2" EMPTY CONDUIT FROM OUTLET TO 6" ABOVE CEILING)
	TELEPHONE OUTLET (MOUNT OUTLET 18" AFF; STUB 3/4" EMPTY CONDUIT FROM OUTLET TO 6" ABOVE CEILING)
	JUNCTION BOX
	DISCONNECT SWITCH (NON-FUSED)
	HOMERUN TO PANEL A; CIRCUIT NUMBER 3 ((2)-#12 + GROUND UNLESS OTHERWISE NOTED)



GROUND FLOOR PLAN - LIGHTING
SCALE: 1/4" = 1'-0"

NOTE:
ALL BEDROOM CIRCUITS TO BE PROTECTED BY FAULT BREAKERS

- ADA COMPLIANCE STANDARDS:
- OPERABLE PARTS:
- LIGHTING CONTROLS, ELECTRICAL RECEPTACLES, ENVIRONMENTAL CONTROLS, AND USER CONTROLS FOR SECURITY OR INTERCOM SYSTEMS, EXCEPT FOR THE FOLLOWING EXCEPTIONS:
01. ELECTRICAL RECEPTACLES SERVING A DEDICATED USE.
 02. APPLIANCE MOUNTED CONTROLS OR SWITCHES.
 03. A SINGLE OUTLET WHERE ALL OF THE FOLLOWING CONDITIONS ARE NOT MET:
 - (a) THE OUTLET IS ABOVE A LENGTH OF COUNTERTOP THAT IS UNINTERRUPTED BY A SINK OR APPLIANCE; AND
 - (b) AT LEAST ONE RECEPTACLE IS PROVIDED FOR THAT LENGTH OF COUNTERTOP; AND
 - (c) ALL OTHER RECEPTACLES PROVIDED FOR THAT LENGTH OF COUNTERTOP COMPLY.
04. FLOOR ELECTRICAL RECEPTACLES.
05. PLUMBING FIXTURE CONTROLS.
06. HVAC DIFFUSERS.
07. CEILING FAN MOUNTED CONTROLS.
- SHALL COMPLY WITH THE FOLLOWING:
01. A PARALLEL 30"x48" CLEAR FLOOR OR GROUND SPACE.
 - (a) UNOBSTRUCTED SIDE REACH: 48" H MAX.
 - (b) OBSTRUCTED SIDE REACH WITH 10" MAX. PROJECTION: 48" H MAX.
 - (c) OBSTRUCTED SIDE REACH WITH 24" MAX. PROJECTION: 46" H MAX.
 02. THE FOLLOWING REACH RANGES:
 - (a) UNOBSTRUCTED SIDE REACH: 48" H MAX.
 - (b) OBSTRUCTED SIDE REACH WITH 10" MAX. PROJECTION: 48" H MAX.
 - (c) OBSTRUCTED SIDE REACH WITH 24" MAX. PROJECTION: 46" H MAX.
- THE FOLLOWING EXCEPTIONS APPLY:
1. WHERE THE USE OF SPECIAL EQUIPMENT DICTATES OTHERWISE.
 2. WHERE ELECTRICAL AND COMMUNICATIONS SYSTEMS RECEPTACLES ARE NOT NORMALLY INTENDED FOR USE BY BUILDING OCCUPANTS.

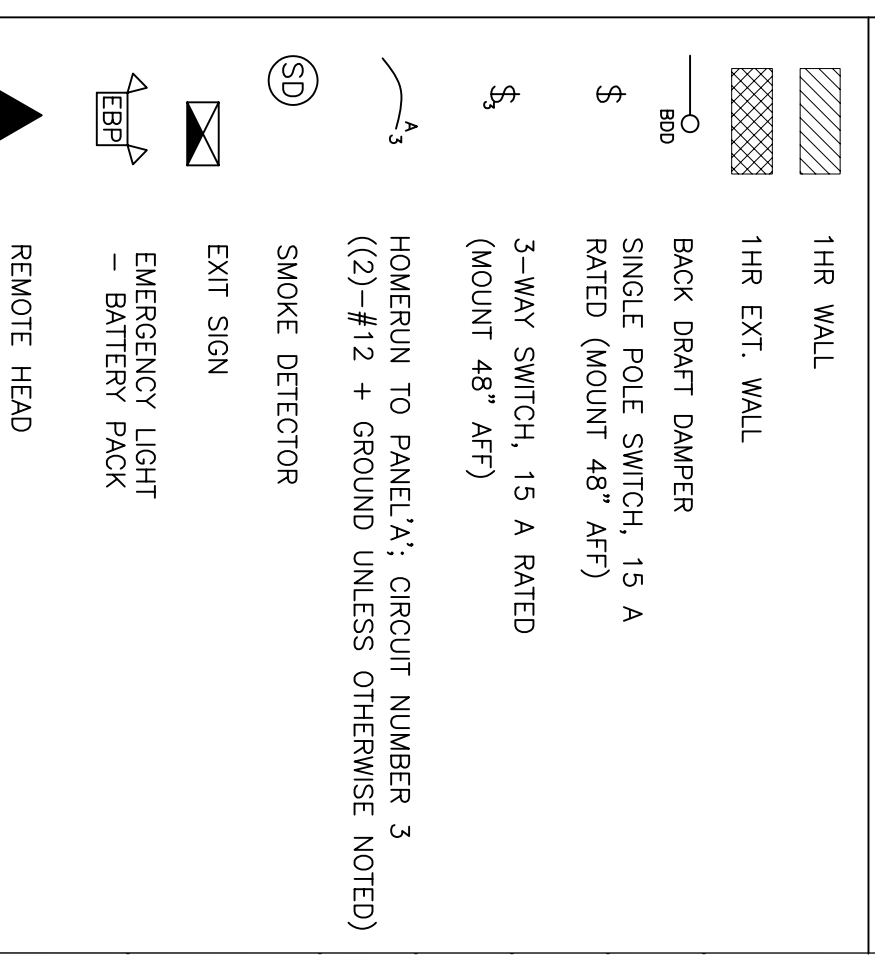


SECOND FLOOR PLAN - LIGHTING
SCALE: 1/4" = 1'-0"

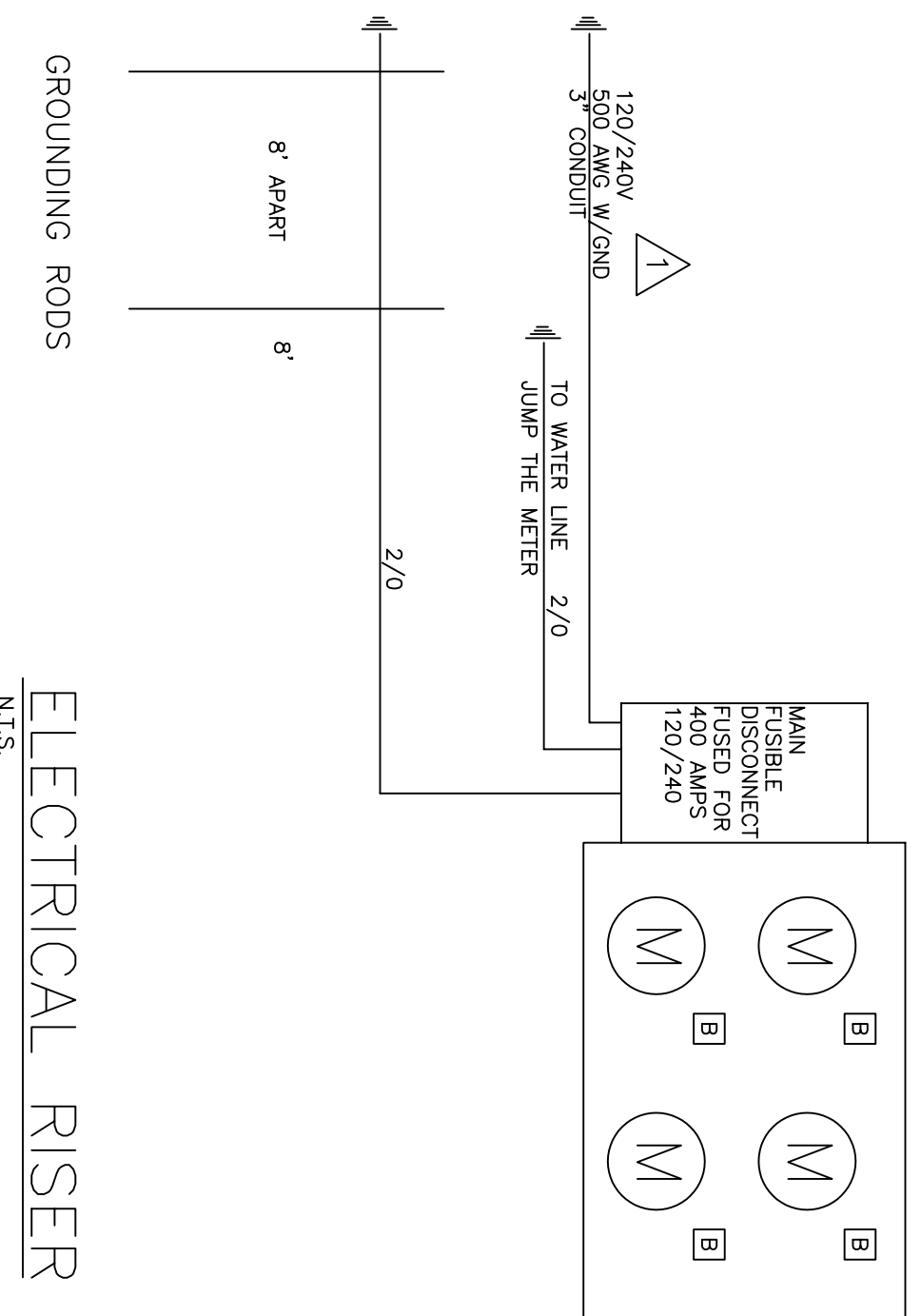
LIGHTING FIXTURE SCHEDULE

FIGURE NO.	DESCRIPTION	LAMPS	VOLTAGE	MOUNTING	MANUFACTURER MODEL # OR EQUIV.	REMARKS
A	CEILING LIGHT	(3) MEDIUM BASE 100W	120	SURFACE		SUPPLIED BY OWNER
B	OUTSIDE LIGHT	(1) MEDIUM BASE 100W	120	WALL	FORTE LIGHTING 1093-01-14	NO SUBSTITUTIONS
C	FAN / LIGHT COMBO	MEDIUM BASE 100W	120	SURFACE	NUTONE FAN/LIGHT MODEL DTR1080L	
D	PORCELAIN SOCKET FIXTURE	(1) MEDIUM BASE 100W	120	SURFACE		IN ATTIC
E	2x4 FLUORESCENT CAN LIGHT	(2) T8 32W (1) 75W	120	RECESSED	LITHONIA G12 PRESQUITE RMNINGS W/ TBW63 6" IC RATED	
F	VANITY LIGHT	(4) 60W MEDIUM BASE	120	WALL	SEAGULL LIGHTING MODEL#: 4455-15	CENTER OVER SINK
G	PATH LIGHT	(1) 100W LED	120	POST	FORTE LIGHTING 1094-01-14	NO SUBSTITUTIONS
	ILLUMINATED EXIT SIGN	LED	120	SURFACE	LITHONIA 120/277 ELN	
	EMERGENCY REMOTE HEAD	8W HALOGEN	12	SURFACE	LITHONIA ELACHS10606	
	EMERGENCY BATTERY PACK	8W HALOGEN	120/12	SURFACE	LITHONIA 6ELM2P	

LEGEND



01. THE DRAWINGS ARE DIAGRAMATIC AND INDICATE THE GENERAL ARRANGEMENT OF SYSTEMS AND EQUIPMENT.
 - A) FURNISH AND INSTALL ALL ELECTRICAL WORK TO ACHIEVE A COMPLETE AND OPERATIONAL ELECTRICAL SYSTEM.
 - B) THE SCOPE OF ELECTRICAL WORK SHALL INCLUDE THE FURNISHING AND INSTALLATION OF ALL LABOR, MATERIALS, EQUIPMENT AND SERVICES AND IN PERFORMING ALL OPERATIONS NECESSARY FOR AND REASONABLY INCIDENTAL TO THE INSTALLATION OF ALL ELECTRICAL SYSTEMS AS INDICATED ON THE DRAWINGS AND SPECIFIED HEREIN.
 - C) THE WORK SHALL INCLUDE ALL WIRING, CONDUIT, GROUNDING, EQUIPMENT, LIGHT FIXTURES, ELECTRICAL DEVICES, DISCONNECTS, RELAYS, CONTACTORS, ETC. ALL COMPONENTS SHALL BE U.L. APPROVED.
 - D) THE ELECTRICAL CONTRACTOR SHALL VERIFY ALL DIMENSIONS AND CONDITIONS AT THE SITE. THE CONTRACTOR SHALL VERIFY THE CONNECTION REQUIREMENTS AND THE CONFIGURATIONS OF EQUIPMENT REQUIRING AN ELECTRICAL CONNECTION BEFORE INSTALLATION.
 - E) ALL ELECTRICAL WORK SHALL CONFORM TO THE LATEST EDITION OF THE NATIONAL ELECTRIC CODE.
03. REFERENCE STANDARDS SHALL BE AS FOLLOWS:
 - A) UNDERWRITER LABORATORIES, INC.: STANDARDS AND LISTING EXIST FOR ELECTRICAL MATERIALS. USE ONLY MATERIALS LISTED AND LABELED BY U.L.
 - B) NATIONAL ELECTRICAL CODE (NEC), NFPA 70, LATEST EDITION, AND ALL GOVERNING STATE AND LOCAL CODES AND ORDINANCES, COMPLY WITH REQUIREMENTS SPECIFIED OR INDICATED ON THE DRAWINGS WHICH EXCEED BUT ARE NOT CONTRARY TO INDICATED CODES AND STANDARDS.
04. POWER CHARACTERISTICS--
 - A) THE GENERAL USE VOLTAGE FOR POWER AND LIGHTING IS 120/240 VOLTS, SINGLE PHASE, 3 WIRE, 60 HERTZ, A.C.
- B) THE CONTRACTOR SHALL INCORPORATE INTO HIS WORK ALL ITEMS REQUIRED BY ALLEGHENY POWER CO., INCLUDING MATERIALS REQUIRED FOR METERING.
05. PROVIDE METERING EQUIPMENT AS INDICATED ON THE DRAWINGS. ALL METERING EQUIPMENT SHALL MEET ALL REQUIREMENTS OF THE ALLEGHENY POWER CO.
06. GROUNDING--
 - A) PROVIDE A COMPLETE AND PERMANENT GROUNDING SYSTEM WITH METHODS AND MATERIALS IN ACCORDANCE WITH THE NATIONAL ELECTRICAL CODE AND THE NATIONAL FIRE PROTECTION ASSOCIATION TO THE GROUNDED NEUTRAL OF ELECTRICAL DISTRIBUTION SYSTEMS AND LIMIT POTENTIAL DIFFERENCES BETWEEN CONDUCTIVE SYSTEMS UNDER FAULT CONDITIONS. GROUNDING SYSTEM SHALL BE IN STRICT ACCORDANCE WITH THE LATEST EDITION OF THE NATIONAL ELECTRIC CODE, ARTICLE 250. GROUNDING.
 - B) GROUND ALL CONDUCTIVE RACEWAYS AND ENCLOSURES FOR ELECTRICAL SYSTEMS WIRING MAKE ALL GROUND CIRCUITS COMPLETE TO FORM PERMANENT CONDUCTIVE PATHS.
 - C) INSTALL GROUND ELECTRODES AS REQUIRED TO ACHIEVE ADEQUATE GROUNDING PER NEC.
07. CONNECTIONS--
 - A) PROVIDE CONDUCTOR INSULATION SYSTEMS U.L. APPROVED AND LISTED FOR SPECIFIC PURPOSES AND FOR USE IN SPECIFIC ENVIRONMENTS WHEN SUCH LISTINGS EXIST.
 - B) ALL FEEDERS SHALL BE TYPE THHN IN EMT CONDUIT OR MC CABLE.
 - C) ALL BRANCH CIRCUIT WIRING SHALL BE TYPE MC CABLE WITH CONDUCTORS RATED 90 DEGREES C.
 - D) ABOVE SUSPENDED CEILING, AND TYPE MC CABLE (RMCX) IN WALLS.
 - E) ALL FEEDERS SHALL BE TYPE THHN IN EMT CONDUIT AND TYPE MC CABLE (RMCX) IN WALLS.
 - F) MAKE ELECTRICAL CONNECTIONS TO EQUIPMENT IN ACCORDANCE WITH EQUIPMENT MANUFACTURERS' RECOMMENDATIONS.
08. ELECTRIC BOXES--
 - A) SHEET METAL, NEMA OS 1, GALVANIZED STEEL.
 - B) NONMETALLIC, NEMA OS 2.
09. WIRING DEVICES AND WALL PLATES--
 - A) SPECIFICATION GRADE PER NEMA STANDARDS.
 - B) FINISH AS SELECTED BY DESIGN PROFESSIONAL.
 - C) LIGHTING SWITCHES-- SIDE SCREW TYPE WIRE CONNECTORS, 20 AMPS, 120 VOLTS, QUIET OPERATING TUMBLER, COLOR AS SELECTED.
 - D) RECEPTACLES-- SIDE SCREW TYPE WIRE CONNECTORS, 20 AMPS, 125 VOLTS, SINGLE PHASE UNLESS OTHERWISE INDICATED.
 - E) ELECTRICAL OUTLETS AND SWITCHES AS LOCATED ON DRAWINGS ARE APPROXIMATE UNLESS DIMENSIONED.
10. PANELBOARDS--
 - A) PROVIDE NEW PANELBOARDS AS INDICATED ON THE DRAWINGS. PROVIDE ALL NECESSARY CIRCUIT BREAKERS AS REQUIRED FOR PROPER BRANCH CIRCUIT OVERCURRENT PROTECTION. REUSE EXISTING CIRCUIT BREAKERS TO THE EXTENT POSSIBLE.
 - B) ACCURATELY LIST CIRCUIT NUMBERS AND DESCRIPTIONS ON CARD IN HOLDER FASTENED TO INTERIOR OF EACH EXISTING PANEL BOARD DOOR.
 - C) INSTALL ALL PANELBOARDS TO MAINTAIN CLEARANCE AS REQUIRED BY THE NATIONAL ELECTRIC CODE.
11. LIGHTING FIXTURES-- PROVIDE LIGHTING FIXTURES PER LIGHTING FIXTURE SCHEDULE ON DRAWINGS. ALL FIXTURES SHALL BE COMPLETE WITH LAMPS.
12. OUTLETS-- PHONE, OR CABLE ON SHARED, DIVIDING WALLS SHALL BE A MIN. OF 2'-0" APART.
13. SMOKE DETECTORS ARE INTERCONNECTED & HAVE BATTERY BACKUP.



NOTE:
SQUARE D ONLY,
NO SUBSTATIONS

PANELBOARD "HP" SCHEDULE

PANEL:	HOUSE PANEL	LOCATION:	MECHANICAL ROOM
VOLTAGE:	120/240V	FEEDER:	3/0 W/GND, 2" COND.
MAIN BUS:		FEATURES:	
MAIN BREAKER:	100 AMP		
MOUNTING:	RECESSED		

FEEDER SIZE	WATTAGE KW	NO. OF POLES	TYPE OF LOAD	SIZE/NO. OF POLES	NO.	WATTAGE KW	FEEDER SIZE
#12	0.36	01	20A/1P	20A/1P	02	0.36	#12
#12	0.30	03	20A/1P	SMRT LIGHTS	04	0.88	#12
#12	0.18	05	20A/1P	MECHANICAL ROOM LIGHTS	06	0.72	#12
#12	0.72	07	20A/1P	PANI LIGHTS	08		
		09	20A/1P		10		
		11	20A/1P		12		
		13	20A/1P		14		
		15	20A/1P		16		
		17	20A/1P		18		
		19	20A/1P		20		
		21	20A/1P		22		
				PHASE A (M)	1.82		
				PHASE B (M)	1.88		
				TOTAL (M)	3.30		

PANELBOARD SCHEDULE

PANEL:	PANEL A	LOCATION:	CAFETERIA
VOLTAGE:	120/240V	FEEDER:	3/0 W/GND, 3" COND.
MAIN BUS:		FEATURES:	
MAIN BREAKER:	200 AMP		
MOUNTING:	RECESSED		

FEEDER SIZE	WATTAGE KW	NO. OF POLES	TYPE OF LOAD	SIZE/NO. OF POLES	NO.	WATTAGE KW	FEEDER SIZE
#12	0.10	01	20A/1P	20A/1P	02	0.45	#12
#12	1.80	03	20A/1P	RECEPTALS	04	0.82	#12
#12	1.08	05	20A/1P	KITCHEN RECEPTALS	06	0.72	#12
#12	0.72	07	20A/1P	KITCHEN RECEPTALS	08	0.36	#12
#12	0.72	09	20A/1P	HMC - INTERIOR UNIT	10	1.02	#12
		11	20A/1P		12	1.02	
		13	20A/1P	HMC - INTERIOR UNIT	14	1.50	#10
		15	20A/1P	WATER HEATER	16	1.50	
		17	20A/1P		18		
		19	20A/1P		20		
		21	20A/1P		22		
				PHASE A (M)	6.30		
				PHASE B (M)	7.88		
				TOTAL (M)	13.98		

PANELBOARD SCHEDULE

PANEL:	PANEL B	LOCATION:	APT. 100 HALLWAY
VOLTAGE:	120/240V	FEEDER:	3/0 W/GND, 3" COND.
MAIN BUS:		FEATURES:	
MAIN BREAKER:	200 AMP		
MOUNTING:	RECESSED		

FEEDER SIZE	WATTAGE KW	NO. OF POLES	TYPE OF LOAD	SIZE/NO. OF POLES	NO.	WATTAGE KW	FEEDER SIZE
#12	2.16	03	20A/1P	LIVING ROOM RECEPTALS	04	1.08	#12
#12	1.44	05	20A/1P	KITCHEN GR1	06	0.72	#12
#12	1.44	07	20A/1P	BEDROOM #3 RECEPTALS	08	0.36	#12
#12	2.16	09	20A/1P	BEDROOM #1 RECEPTALS	10	0.36	#12
#12	1.80	11	20A/1P	BEDROOM #2 RECEPTALS	12	1.40	#12
#8	2.28	13	40A/2P	DRYER	14	2.28	#8
#12	0.54	17	20A/1P	LIVING / KITCHEN / STORAGE LIGHTS	18	0.72	#12
#12	1.68	19	20A/1P	SMOKE DETECTORS	20	0.10	#12
#10	1.68	21	20A/2P	HMC - HEAT PUMP	22	2.88	#6
		23			24	2.88	
		25			26		
		27			28		
		29			30		
		31			32		
		33			34		
		35			36		
		37			38		
		39			40		
		41			42		
				PHASE A (M)	16.24		
				PHASE B (M)	18.12		
				TOTAL (M)	35.35		

PANELBOARD SCHEDULE

PANEL:	PANEL C	LOCATION:	APT. 200 KITCHEN
VOLTAGE:	120/240V	FEEDER:	3/0 W/GND
MAIN BUS:		FEATURES:	
MAIN BREAKER:	200 AMP		
MOUNTING:	RECESSED		

FEEDER SIZE	WATTAGE KW	NO. OF POLES	TYPE OF LOAD	SIZE/NO. OF POLES	NO.	WATTAGE KW	FEEDER SIZE
#12	0.36	01	20A/1P	20A/1P	02	0.72	#12
#12	1.80	03	20A/1P	BEDROOM #1 RECEPTALS	04	0.72	#12
#12	1.80	05	20A/1P	BEDROOM #2 RECEPTALS	06	0.54	#12
#12	1.80	07	20A/1P	BEDROOM #3 RECEPTALS	08	0.54	#12
#12	1.44	09	20A/1P	BEDROOM #4/5 RECEPTALS	10	0.36	#12
#12	1.80	11	20A/1P	BEDROOM #6 RECEPTALS	12	0.36	#12
#12	1.44	13	20A/1P	BEDROOM #7/8 RECEPTALS	14	0.56	#12
#12	1.40	15	20A/1P	BATHROOM LIGHTS / GR1	16	1.08	#12
#12	1.80	17	20A/1P	LIVING ROOM RECEPTALS	18	0.90	#12
#12	1.44	19	20A/1P	BEDROOM #9/10/11 LIGHTS	20	0.72	#12
#8	2.28	21	40A/2P	DWNG ROOM RECEPTALS	22	2.28	#6
		23		RANGE	24	2.28	
		25	40A/2P	DRYER	26	0.96	#12
		27		REFRIGERATOR	28	0.96	#12
#10	1.50	29	20A/2P	WATER HEATER	30	0.24	#12
		31		SMOKE DETECTORS	32	0.12	#12
#12	1.44	33	20A/1P	BEDROOM #2 - RECEPTALS	34	1.44	#12
#12	.70	35	20A/1P	BEDROOM #1 - RECEPTALS	36		
		37		HMC - HEAT PUMP	38	4.32	#4
		39			40	4.32	
		41			42		
				PHASE A (M)	29.54		
				PHASE B (M)	26.88		
				TOTAL (M)	56.52		

NOTE:
ALL BEDROOM CIRCUITS TO BE PROTECTED BY FAULT BREAKERS