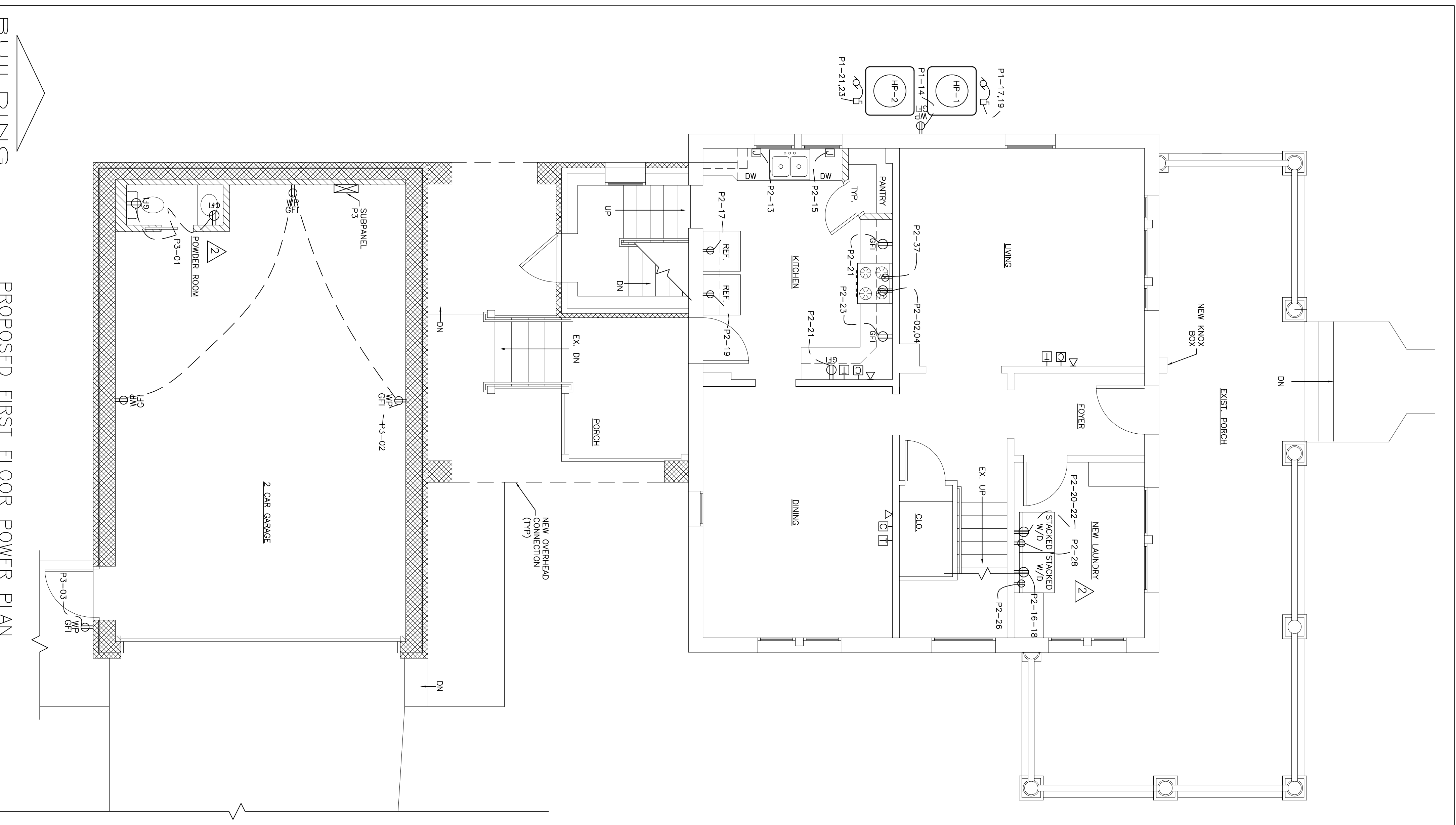
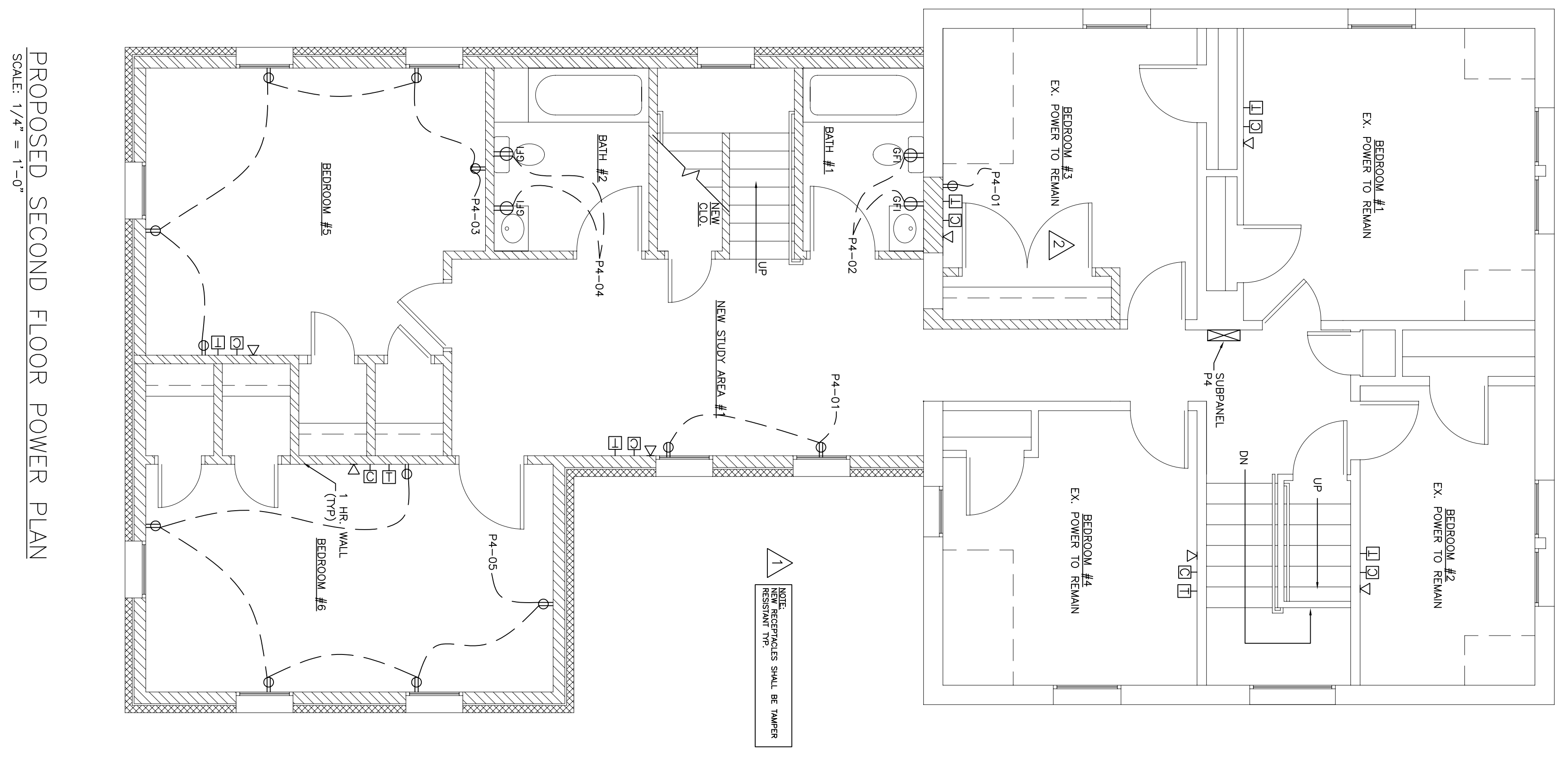


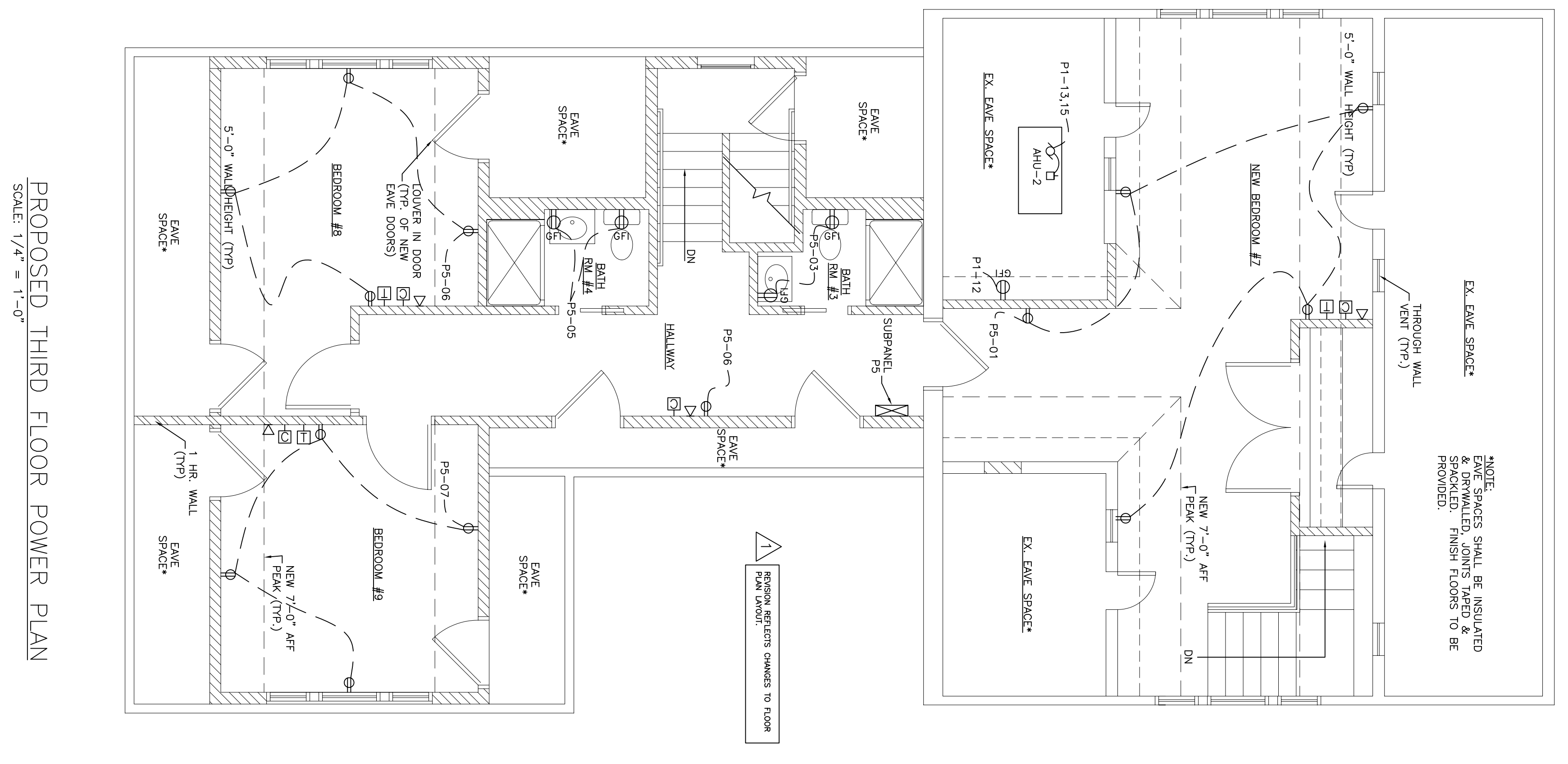
LEGEND			
	NEW WALL		GROUND FAULT INTERRUPTING TYPE WATER-PROOF RECEPTACLE, NEMA 3R ENCLOSURE
	NEW BRICK		CABLE JACK
	NEW 1 HR. WALL		COMPUTER OUTLET (MOUNT OUTLET 18" AFF, STUB 2" EMPTY CONDUIT FROM OUTLET TO 6" ABOVE CEILING)
	DUPLEX RECEPTACLE (MOUNT 18" AFF)		TELEPHONE OUTLET (MOUNT OUTLET 18" AFF, STUB 3/4" EMPTY CONDUIT FROM OUTLET TO 6" ABOVE CEILING)
	220V RECEPTACLE		GROUND FAULT INTERRUPTING TYPE RECEPTACLE
	MOTOR		NON-FUSED DISCONNECT



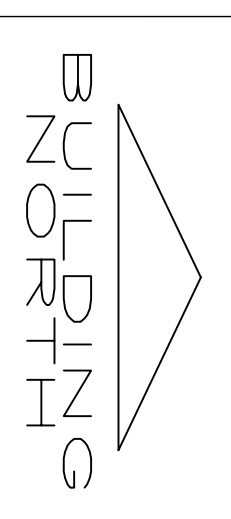
PROPOSED FIRST FLOOR POWER PLAN
SCALE: 1/4" = 1'-0"



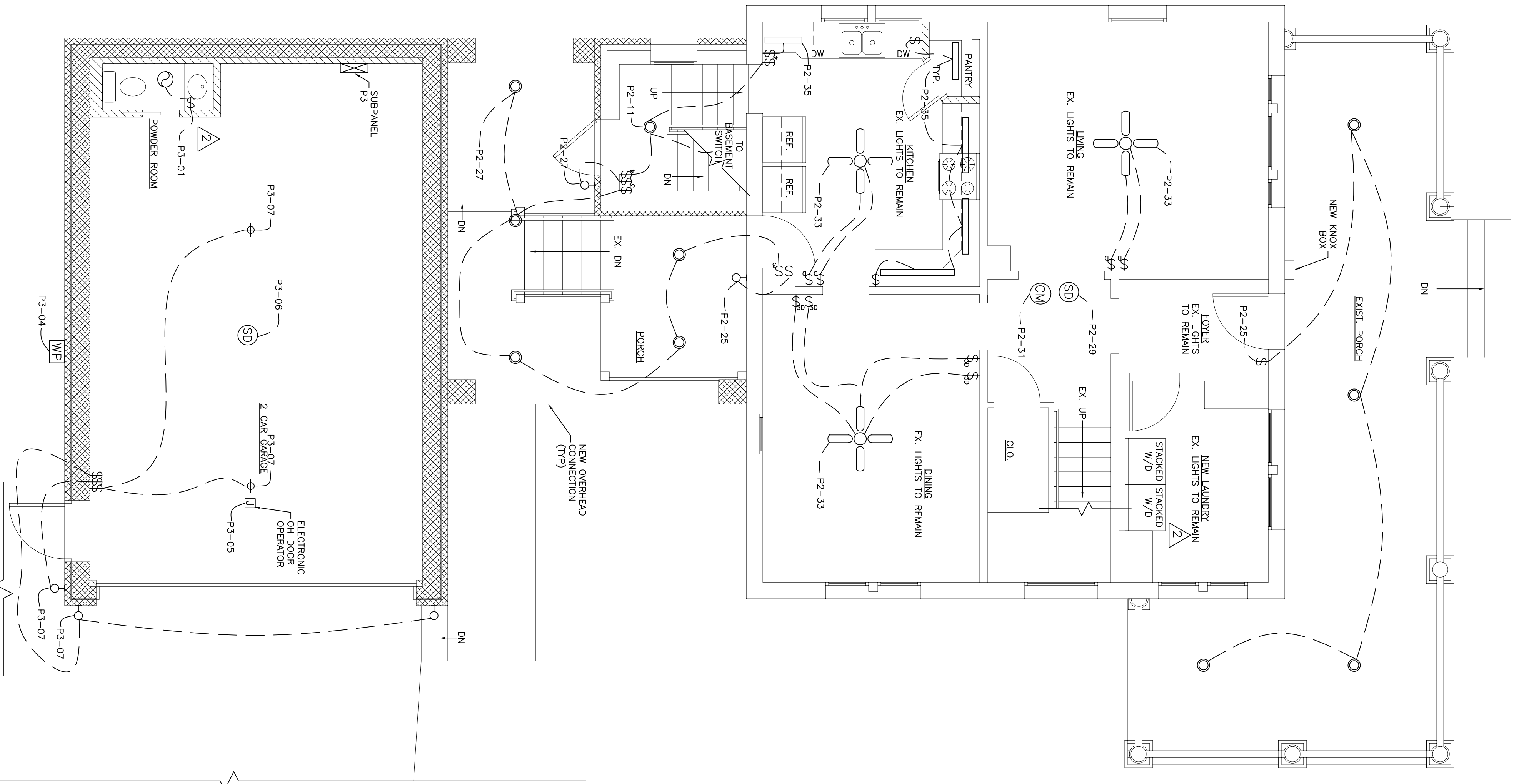
PROPOSED SECOND FLOOR POWER PLAN
SCALE: 1/4" = 1'-0"



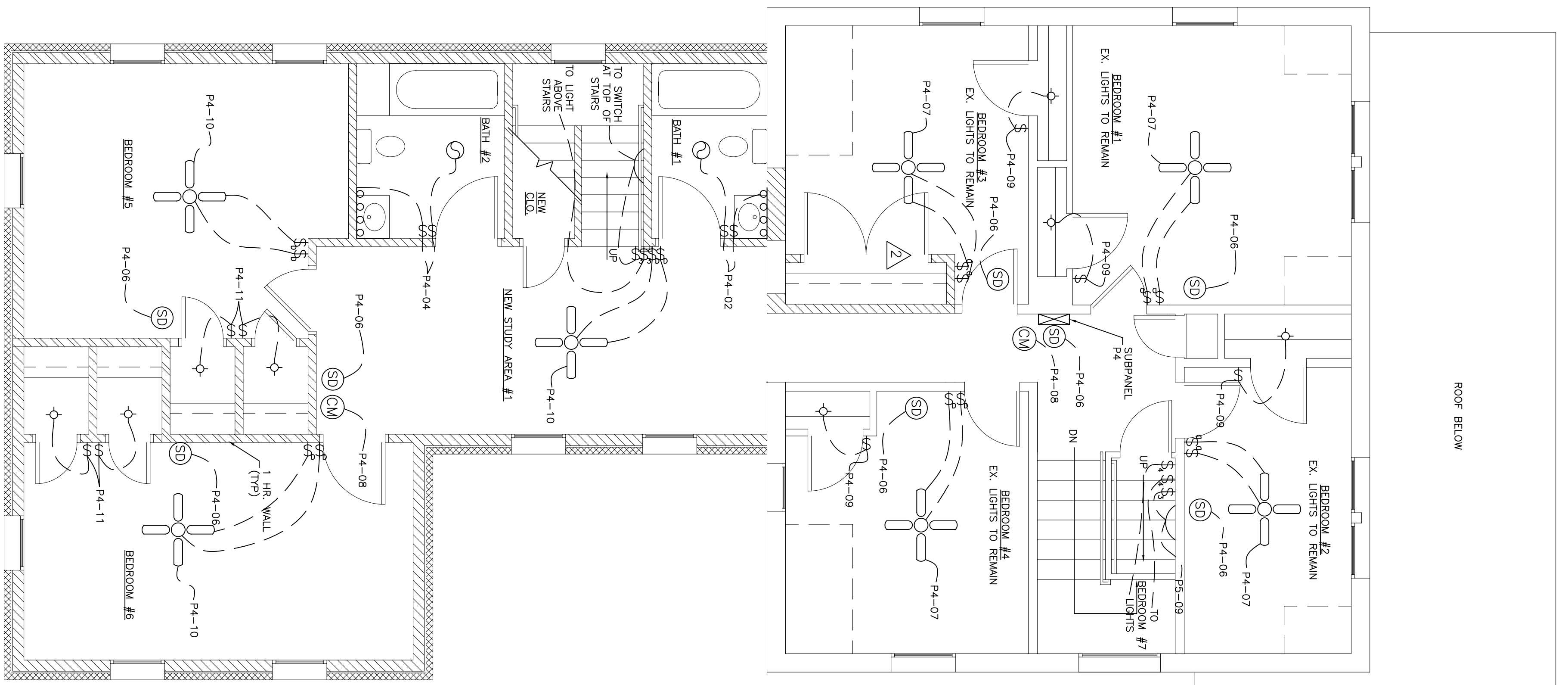
PROPOSED THIRD FLOOR POWER PLAN
SCALE: 1/4" = 1'-0"



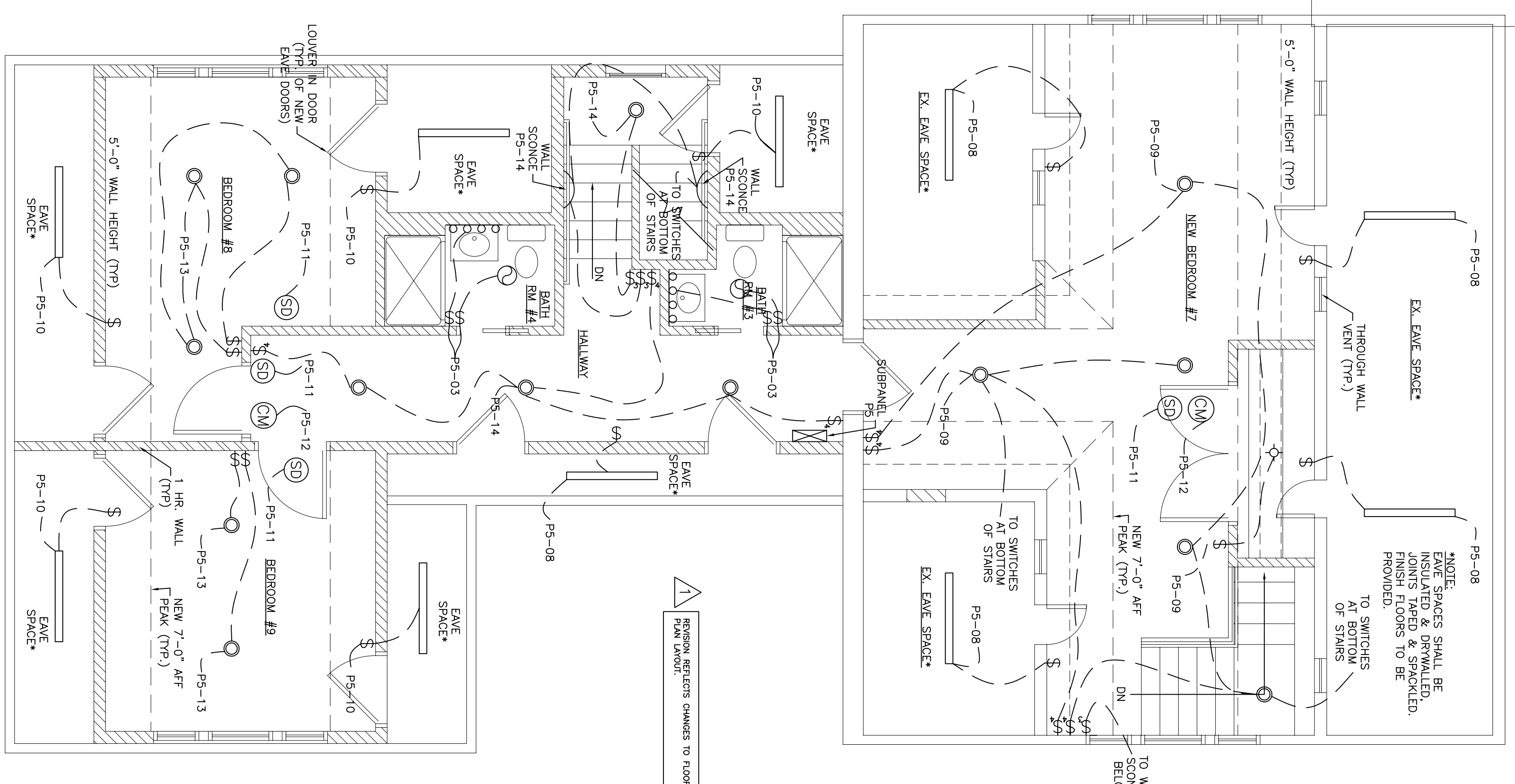
LEGEND	
	NEW WALL
	NEW BRICK
	NEW 1 HR. WALL
\$	SINGLE POLE SWITCH, 15 A RATED (MOUNT 48" AFF)
\$	3-WAY SWITCH, 15 A RATED (MOUNT 48" AFF)
SD	SMOKE DETECTOR
CM	CARBON MONOXIDE DETECTOR



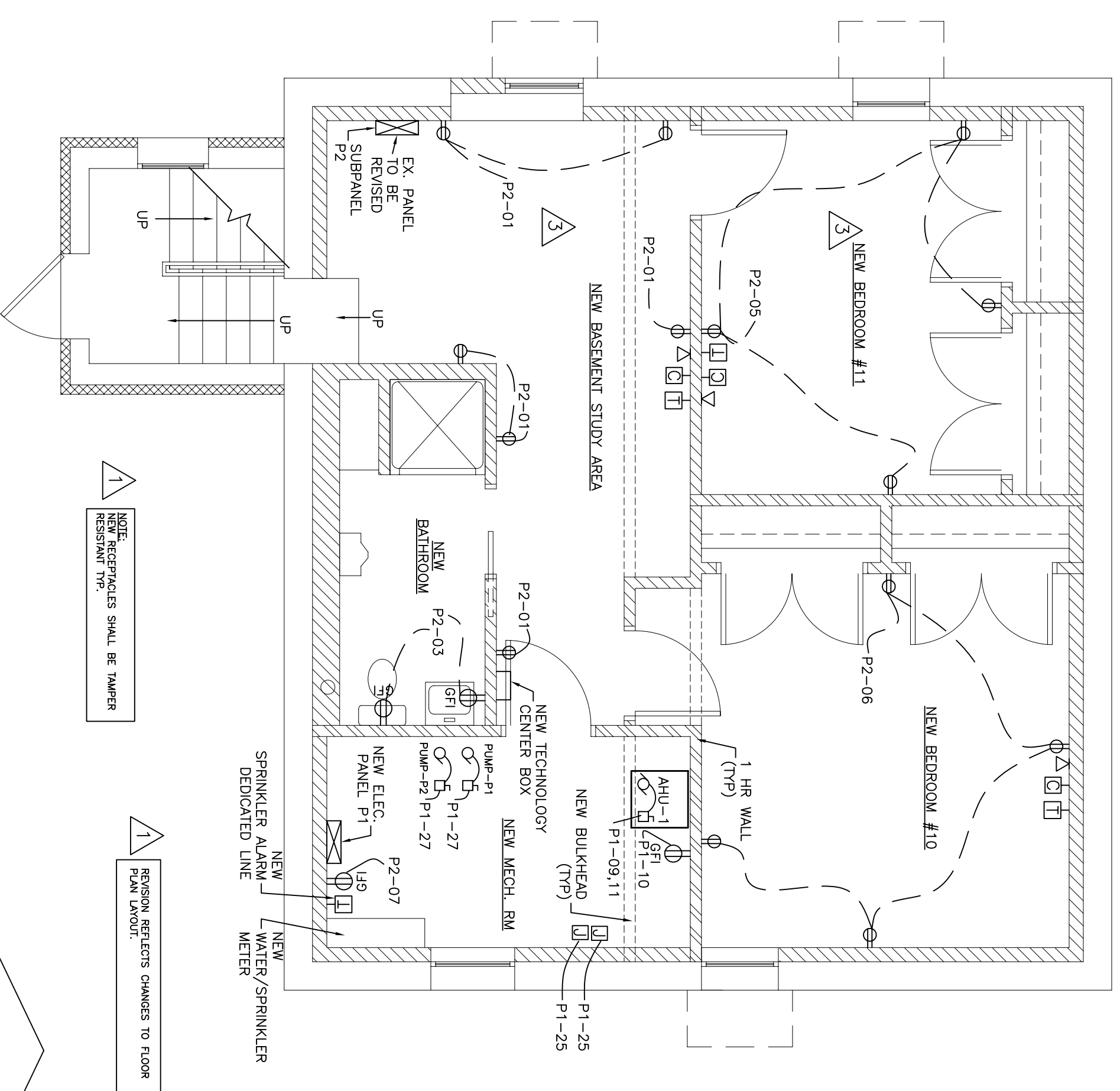
BUILDING
PROPOSED FIRST FLOOR REFLECTED CEILING PLAN
 SCALE: 1/4" = 1'-0"



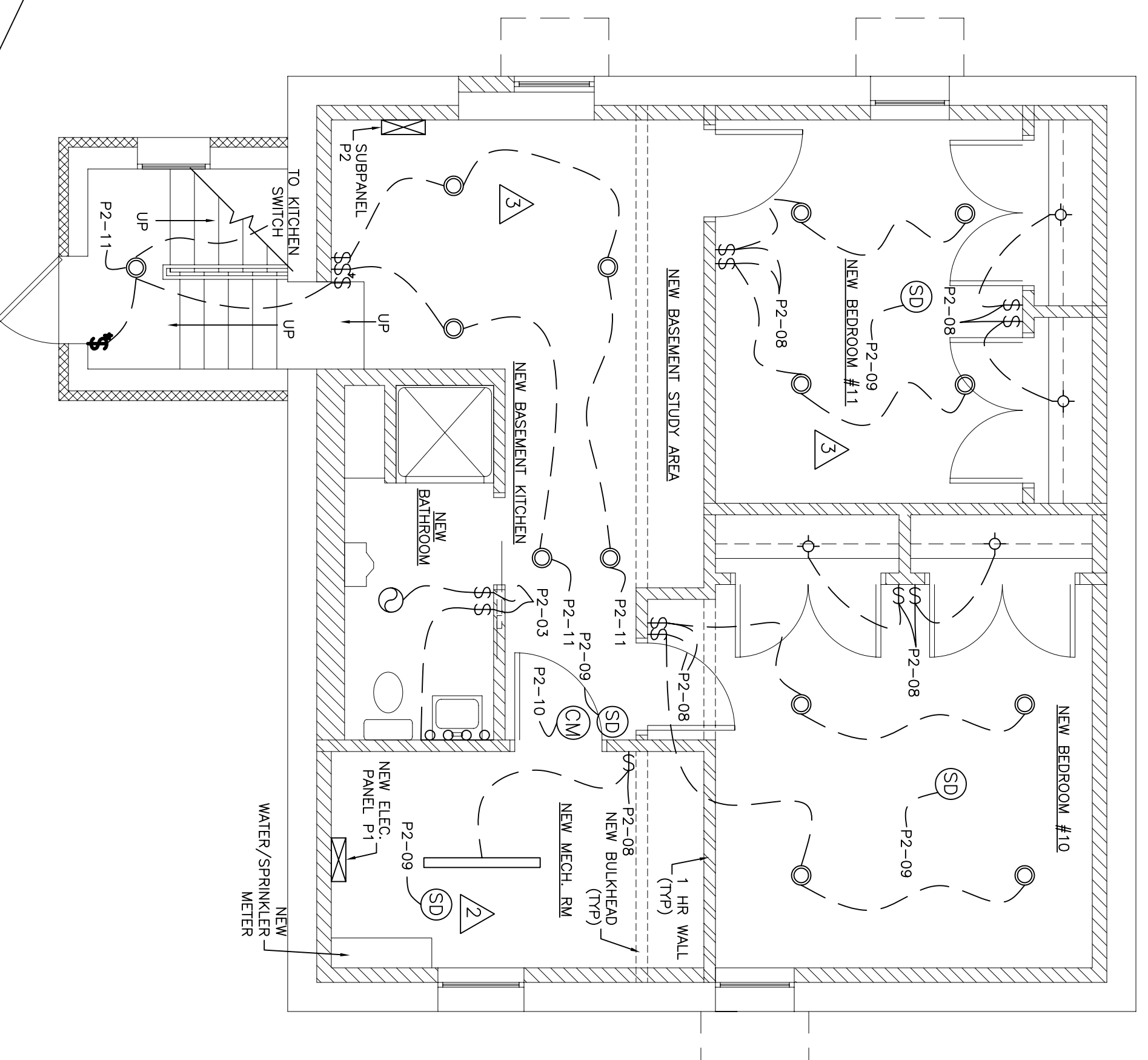
PROPOSED SECOND FLOOR REFLECTED CEILING PLAN
 SCALE: 1/4" = 1'-0"



PROPOSED THIRD FLOOR REFLECTED CEILING PLAN
 SCALE: 1/4" = 1'-0"



PROPOSED BASEMENT POWER PLAN
SCALE: 1/4" = 1'-0"



PROPOSED BASEMENT REFLECTED CEILING PLAN
SCALE: 1/4" = 1'-0"

DIVISION 26 ELECTRICAL

01. THE DRAWINGS ARE DIAGRAMMATIC AND INDICATE THE GENERAL ARRANGEMENT OF SYSTEMS AND EQUIPMENT.

02. SCOPE OF WORK-

- A) FURNISH AND INSTALL ALL ELECTRICAL WORK TO ACHIEVE A COMPLETE AND OPERATIONAL ELECTRICAL SYSTEM.
- B) THE SCOPE OF ELECTRICAL WORK SHALL INCLUDE THE FURNISHING AND INSTALLATION OF ALL LABOR, MATERIALS, EQUIPMENT AND SERVICES AND IN PERFORMING ALL OPERATIONS NECESSARY FOR AND REASONABLY INCIDENTAL TO THE INSTALLATION OF ALL ELECTRICAL SYSTEMS AS INDICATED ON THE DRAWINGS AND SPECIFIED HEREIN.
- C) THE COMPLETE SYSTEM SHALL INCLUDE ALL WIRING, CONDUIT, GROUNDING, EQUIPMENT, LIGHT FIXTURES, ELECTRICAL DEVICES, DISCONNECTS, RELAYS, CONTRACTORS, ETC. ALL COMPONENTS SHALL BE U.L. LISTED.
- D) THE ELECTRICAL CONTRACTOR SHALL VERIFY ALL DIMENSIONS AND CONDITIONS AT THE SITE. THE CONTRACTOR SHALL VERIFY THE CONNECTION REQUIREMENTS AND THE CONFIGURATIONS OF EQUIPMENT REQUIRING AN ELECTRICAL CONNECTION BEFORE INSTALLATION.
- E) ALL ELECTRICAL WORK SHALL CONFORM TO THE LATEST EDITION OF THE NATIONAL ELECTRIC CODE.

03. REFERENCE STANDARDS SHALL BE AS FOLLOWS:

- A) UNDERWRITER LABORATORIES, INC.: STANDARDS AND LISTING EXIST FOR ELECTRICAL MATERIALS. USE ONLY MATERIALS LISTED AND LABELED BY UL.
- B) NATIONAL ELECTRICAL CODE (NEC), NFPA 70, LATEST EDITION, AND ALL GOVERNING STATE AND LOCAL CODES AND ORDINANCES. COMPLY WITH REQUIREMENTS SPECIFIED OR INDICATED ON THE DRAWINGS WHICH EXCEED BUT ARE NOT CONTRARY TO INDICATED CODES AND STANDARDS.

04. POWER CHARACTERISTICS-

- A) PROVIDE ONE VOLTAGE FOR POWER AND LIGHTING IS 120/240 VOLTS, SINGLE PHASE, 3 WIRE, 60 HERTZ, A.C.

05. THE CONTRACTOR SHALL INCORPORATE INTO HIS WORK ALL ITEMS REQUIRED BY ALLEGHENY POWER CO., INCLUDING MATERIALS REQUIRED FOR METERING.

06. PROVIDE METERING EQUIPMENT AS INDICATED ON THE DRAWINGS. ALL METERING EQUIPMENT SHALL MEET ALL REQUIREMENTS OF THE ALLEGHENY POWER CO.

07. CONNECTIONS-

- A) PROVIDE CONDUCTOR INSULATION SYSTEMS U.L. APPROVED AND LISTED FOR SPECIFIC PURPOSES AND FOR USE IN SPECIFIC ENVIRONMENTS WHEN SUCH LISTINGS EXIST.
- B) ALL FEEDERS SHALL BE TYPE THHN IN EMT CONDUIT OR MC CABLE.
- C) ALL BRANCH CIRCUIT WIRING SHALL BE TYPE MC CABLE WITH CONDUCTORS RATED 90 DEGREES C, ABOVE SUSPENDED CEILINGS, AND TYPE MN CABLE (ROMEX) IN WALLS.
- D) ALL CONDUCTORS ARE NO. 12 AWG COPPER UNLESS INDICATED OR SPECIFIED OTHERWISE.
- E) MAKE ELECTRICAL CONNECTIONS TO EQUIPMENT IN ACCORDANCE WITH EQUIPMENT MANUFACTURERS' RECOMMENDATIONS.

08. ELECTRIC BOXES-

- A) SHEET METAL, NEMA OS 1, GALVANIZED STEEL.
- B) NONMETALLIC, NEMA OS 2.

09. WIRING DEVICES AND WALL PLATES-

- A) SPECIFICATION GRADE PER NEMA STANDARDS.
- B) FINISH AS SELECTED BY ARCHITECT OR DESIGN PROFESSIONAL.
- C) TUMBLER, COLOR AS SELECTED.
- D) RECEPTACLES- SIDE SCREW TYPE WIRE CONNECTORS, 20 AMPS, 125 VOLTS, SINGLE PHASE UNLESS OTHERWISE INDICATED.
- E) ELECTRICAL OUTLETS AND SWITCHES AS LOCATED ON DRAWINGS ARE APPROXIMATE UNLESS DIMENSIONED.

10. SAFETY SWITCHES- PROVIDE SAFETY SWITCHES WHERE INDICATED AND AS REQUIRED BY CODE WITH RATINGS NEMA 3R ENCLOSURES IN ALL EXTERIOR OR DAMP LOCATIONS.

11. PANELBOARDS- PROVIDE NEW PANELBOARDS AS INDICATED ON THE DRAWINGS. PROVIDE ALL NECESSARY CIRCUIT BREAKERS AS REQUIRED FOR PROPER BRANCH CIRCUIT OVERCURRENT PROTECTION. REUSE EXISTING CIRCUIT BREAKERS TO THE EXTENT POSSIBLE.

12. LIGHTING FIXTURES- PROVIDE LIGHTING FIXTURES PER LIGHTING FIXTURE SCHEDULE ON DRAWINGS. ALL FIXTURES SHALL BE COMPLETE WITH LAMPS.

13. OUTLETS- PHONE, OR CABLE ON SHARED, DIVIDING WALLS SHALL BE A MIN. OF 2'-0" APART.

14. SMOKE DETECTORS ARE INTERCONNECTED & HAVE BATTERY BACKUP.

DIVISION 26 ELECTRICAL - CONT'D

01. THE DRAWINGS ARE DIAGRAMMATIC AND INDICATE THE GENERAL ARRANGEMENT OF SYSTEMS AND EQUIPMENT.

02. SCOPE OF WORK-

- A) FURNISH AND INSTALL ALL ELECTRICAL WORK TO ACHIEVE A COMPLETE AND OPERATIONAL ELECTRICAL SYSTEM.
- B) THE SCOPE OF ELECTRICAL WORK SHALL INCLUDE THE FURNISHING AND INSTALLATION OF ALL LABOR, MATERIALS, EQUIPMENT AND SERVICES AND IN PERFORMING ALL OPERATIONS NECESSARY FOR AND REASONABLY INCIDENTAL TO THE INSTALLATION OF ALL ELECTRICAL SYSTEMS AS INDICATED ON THE DRAWINGS AND SPECIFIED HEREIN.
- C) THE COMPLETE SYSTEM SHALL INCLUDE ALL WIRING, CONDUIT, GROUNDING, EQUIPMENT, LIGHT FIXTURES, ELECTRICAL DEVICES, DISCONNECTS, RELAYS, CONTRACTORS, ETC. ALL COMPONENTS SHALL BE U.L. LISTED.
- D) THE ELECTRICAL CONTRACTOR SHALL VERIFY ALL DIMENSIONS AND CONDITIONS AT THE SITE. THE CONTRACTOR SHALL VERIFY THE CONNECTION REQUIREMENTS AND THE CONFIGURATIONS OF EQUIPMENT REQUIRING AN ELECTRICAL CONNECTION BEFORE INSTALLATION.
- E) ALL ELECTRICAL WORK SHALL CONFORM TO THE LATEST EDITION OF THE NATIONAL ELECTRIC CODE.

03. REFERENCE STANDARDS SHALL BE AS FOLLOWS:

- A) UNDERWRITER LABORATORIES, INC.: STANDARDS AND LISTING EXIST FOR ELECTRICAL MATERIALS. USE ONLY MATERIALS LISTED AND LABELED BY UL.
- B) NATIONAL ELECTRICAL CODE (NEC), NFPA 70, LATEST EDITION, AND ALL GOVERNING STATE AND LOCAL CODES AND ORDINANCES. COMPLY WITH REQUIREMENTS SPECIFIED OR INDICATED ON THE DRAWINGS WHICH EXCEED BUT ARE NOT CONTRARY TO INDICATED CODES AND STANDARDS.

04. POWER CHARACTERISTICS-

- A) PROVIDE ONE VOLTAGE FOR POWER AND LIGHTING IS 120/240 VOLTS, SINGLE PHASE, 3 WIRE, 60 HERTZ, A.C.

05. THE CONTRACTOR SHALL INCORPORATE INTO HIS WORK ALL ITEMS REQUIRED BY ALLEGHENY POWER CO., INCLUDING MATERIALS REQUIRED FOR METERING.

06. PROVIDE METERING EQUIPMENT AS INDICATED ON THE DRAWINGS. ALL METERING EQUIPMENT SHALL MEET ALL REQUIREMENTS OF THE ALLEGHENY POWER CO.

07. CONNECTIONS-

- A) PROVIDE CONDUCTOR INSULATION SYSTEMS U.L. APPROVED AND LISTED FOR SPECIFIC PURPOSES AND FOR USE IN SPECIFIC ENVIRONMENTS WHEN SUCH LISTINGS EXIST.
- B) ALL FEEDERS SHALL BE TYPE THHN IN EMT CONDUIT OR MC CABLE.
- C) ALL BRANCH CIRCUIT WIRING SHALL BE TYPE MC CABLE WITH CONDUCTORS RATED 90 DEGREES C, ABOVE SUSPENDED CEILINGS, AND TYPE MN CABLE (ROMEX) IN WALLS.
- D) ALL CONDUCTORS ARE NO. 12 AWG COPPER UNLESS INDICATED OR SPECIFIED OTHERWISE.
- E) MAKE ELECTRICAL CONNECTIONS TO EQUIPMENT IN ACCORDANCE WITH EQUIPMENT MANUFACTURERS' RECOMMENDATIONS.

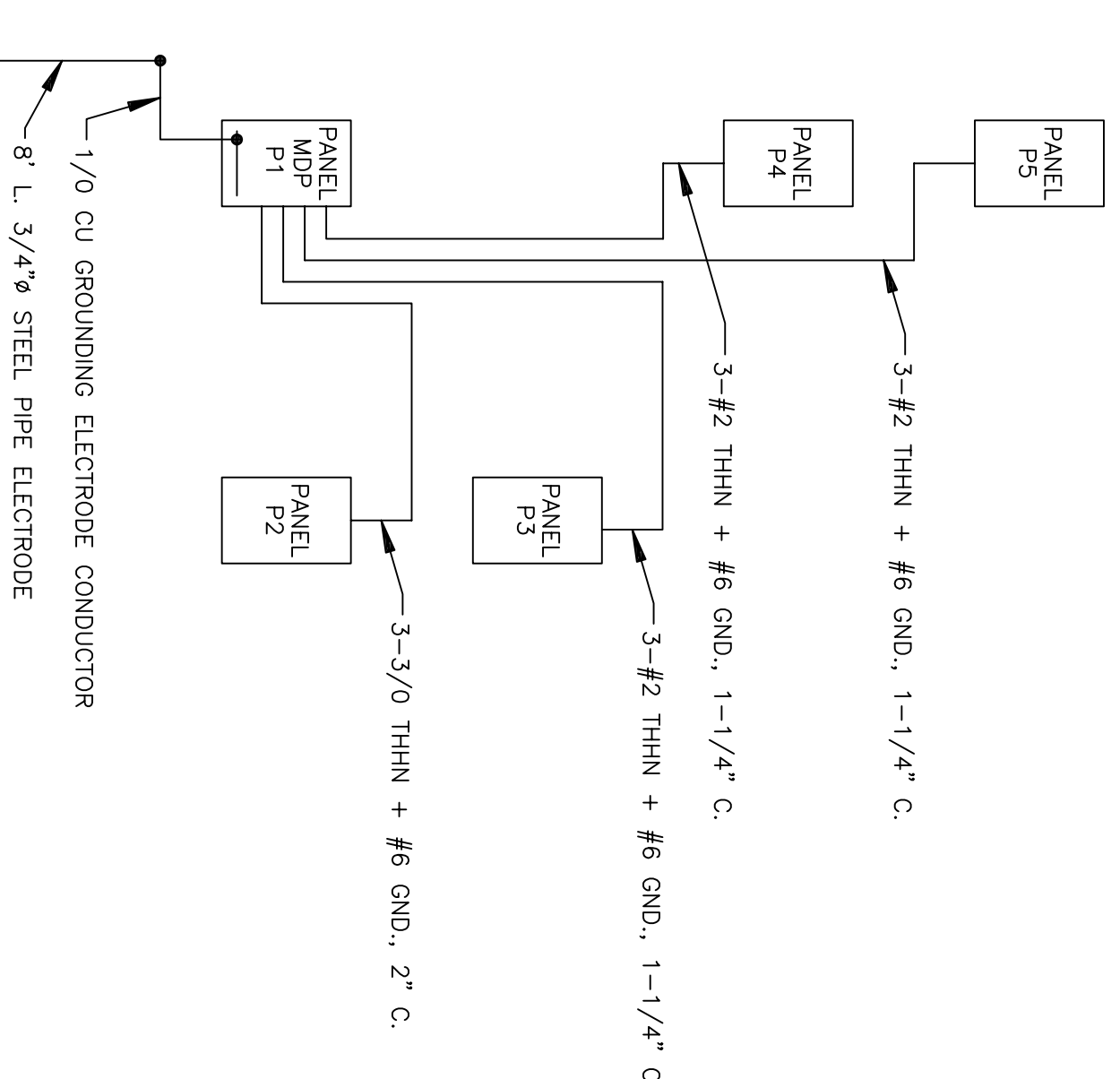
LIGHTING FIXTURE SCHEDULE					REMARKS
FIXTURE NO.	DESCRIPTION	LAMPS	VOLTAGE	MOUNTING	MFG. MODEL # OR EQUIV.
1	CEILING LIGHT	(1)MEDIUM BASE 20W CFL	120	SURFACE	SUPPLIED BY OWNER
2	OUTSIDE LIGHT	(1)MEDIUM BASE 20W CFL	120	WALL	
3	FAN / LIGHT COMBO	(1)MEDIUM BASE 20W CFL	120	SURFACE	
4	POCELAIN SOCKET FIXTURE	(1)MEDIUM BASE 20W CFL	120	SURFACE	
5	CAN LIGHT	(1)MEDIUM BASE 20W CFL	120	RECESSED	
6	VANITY LIGHT	(4)MEDIUM BASE 20W CFL	120	WALL	
7	CEILING FAN	(3)MEDIUM BASE 20W CFL	120	SURFACE	
8	WALL PACK	100W MH (1)36" T8 25W	120	WALL	PHOTOCELL DUSK/DAWN
9	FLUORESCENT	(1)MEDIUM BASE 20W CFL	120	SURFACE	
10	WALL SCONCE	(1)MEDIUM BASE 20W CFL	120	WALL	

1. MODEL NUMBERS INSTALLED IN THERMAL ENVELOPE SHALL BE TYPE C & AIR TIGHT

1. AQL COMPLIANCE STANDARDS:

OPERABLE PARTS:
LIGHTING CONTROLS, ELECTRICAL RECEPTACLES, ENVIRONMENTAL CONTROLS, AND USER CONTROLS FOR SECURITY OR INTERCOM SYSTEMS, EXCEPT FOR THE FOLLOWING EXCEPTIONS:

- 01. ELECTRICAL RECEPTACLES SERVING A DEDICATED USE.
- 02. APPLIANCE MOUNTED CONTROLS OR SWITCHES.
- 03. SWITCHES, OUTLET WHERE ALL OF THE FOLLOWING CONDITIONS ARE NOT MET:
 - (a) THE OUTLET IS ABOVE A LENGTH OF COUNTERTOP THAT IS UNINTERRUPTED BY A SINK OR APPLIANCE; AND
 - (b) AT LEAST ONE RECEPTACLE IS PROVIDED FOR THE COUNTERTOP; AND
 - (c) ALL OTHER RECEPTACLES PROVIDED FOR THAT LENGTH OF COUNTERTOP COMPLY.
- 04. FLOOR ELECTRICAL RECEPTACLES.
- 05. PLUMBING FIXTURE CONTROLS.
- 06. FLOOR FIXTURES.
- 07. CEILING FAN MOUNTED CONTROLS.



ELECTRICAL SINGLE LINE RISER DIAGRAM
NO SCALE

LEGEND

- NEW WALL
- NEW BRICK
- NEW 1 HR. WALL
- DUPELEX RECEPTACLE (MOUNT 18" AFF)
- 220V RECEPTACLE
- GROUND FAULT INTERRUPTING TYPE RECEPTACLE
- GROUND FAULT INTERRUPTING TYPE WATER PROOF RECEPTACLE, NEMA 3R ENCLOSURE
- CABLE JACK
- COMPUTER OUTLET (MOUNT OUTLET 18" AFF; STUB 2" EMPTY CONDUIT FROM OUTLET TO 6" ABOVE CEILING)
- TELEPHONE OUTLET (MOUNT OUTLET 18" AFF; STUB 3/4" EMPTY CONDUIT FROM OUTLET TO 6" ABOVE CEILING)
- JUNCTION BOX
- MOTOR
- NON-FUSED DISCONNECT
- SINGLE POLE SWITCH, 15 A RATED (MOUNT 48" AFF)
- 3-WAY SWITCH, 15 A RATED (MOUNT 48" AFF)
- SMOKE DETECTOR
- CARBON MONOXIDE DETECTOR

PANELBOARD SCHEDULE

PANEL: MDP - P1		LOCATION: NEW MECHANICAL ROOM			
VOLTAGE: 120/240V		FEEDER: 3 - 5/0 THHN W/ #6 CU GND, 2" C.			
MAIN BUS: 400 AMP		FEATURES: -			
MAIN BREAKER: 400 AMP		MOUNTING: SURFACE			
NO. OF POLES	SIZE/NO. OF POLES	TYPE OF LOAD	TYPE OF LOAD	SIZE/NO. OF POLES	NO.
01	200/1P	PANEL P2	PANEL P3	1254/2P	04
03	200/2P				08
05	1254/2P	PANEL P4	PANEL P5	1254/2P	08
07	200/1P				10
09	200/2P	AHU-1	AHU-1 RECEPT.	200/1P	12
11	200/2P	AHU-2	AHU-2 RECEPT.	200/1P	14
13	200/2P		HEAT PUMP RECEPT.	200/1P	16
15	200/2P				18
17	200/2P	HP-1			20
19	200/2P				22
21	200/2P	HP-2			24
23	200/2P				26
25	200/1P	WATER HEATER			28
27	200/1P	PUMP 1 & 2			30
29					32
31					34
33					36
35					38
37					40
39					42
41					

PANELBOARD SCHEDULE

PANEL: P2 (BSMT. & 1ST FL)		LOCATION: BASEMENT LIVING RM			
VOLTAGE: 120/240V		FEEDER: 3-5/0 THHN W/ #6 CU GND, 2" C.			
MAIN BUS: 200 AMP		FEATURES: AFCI BREAKERS FOR BEDROOM RECEPTACLES			
MAIN BREAKER: MLO		MOUNTING: SURFACE			
NO. OF POLES	SIZE/NO. OF POLES	TYPE OF LOAD	TYPE OF LOAD	SIZE/NO. OF POLES	NO.
01	200/1P	BEDROOM STUDY RECEPT.	RANCE	200/2P	02
03	200/1P	NEW BEDROOM SHOWER IN & LIGHTS			04
05	200/1P	BEDROOM #1 RECEPT.	BEDROOM #10 & MECH. ROOM LIGHTS	200/1P	06
07	200/1P	MECHANICAL ROOM GFI	BEDROOM #10 & MECH. ROOM LIGHTS	200/1P	08
09	200/1P	BEDROOM SMOKE DETECTORS	BEDROOM CARBON MONOXIDE DETECTOR	200/1P	10
11	200/1P	BEDROOM STUDY STAR LIGHTS			12
13	200/1P	OSWIMMER			14
15	200/1P	OSWIMMER			16
17	200/1P	REFRIGERATOR	OPER	404/2P	18
19	200/1P	REFRIGERATOR	OPER	404/2P	20
21	200/1P	KITCHEN GFI			22
23	200/1P	KITCHEN GFI			24
25	200/1P	PORCH LIGHTS	MISER	200/1P	26
27	200/1P	PORCH LIGHTS	MISER	200/1P	28
29	200/1P	FIRST FLOOR SMOKE DETECTORS			30
31	200/1P	FIRST FLOOR CARBON MONOXIDE DETECTOR			32
33	200/2P	FIRST FLOOR CEILING FANS			34
35	200/1P	KITCHEN UNDER CABINETS LIGHTS			36
37	200/1P	MISER			38
39					40
41	200/1P			200/1P	42

PANELBOARD SCHEDULE

PANEL: P3 (GARAGE)		LOCATION: GARAGE			
VOLTAGE: 120/240V		FEEDER: 3-5/0 THHN W/ #6 CU GND, 2" C.			
MAIN BUS: MLO		FEATURES: AFCI BREAKERS FOR BEDROOM RECEPTACLES			
MAIN BREAKER: 125 AMP		MOUNTING: SURFACE			
NO. OF POLES	SIZE/NO. OF POLES	TYPE OF LOAD	TYPE OF LOAD	SIZE/NO. OF POLES	NO.
01	200/1P	POWDER ROOM GFI LIGHTS	GARAGE RECEPTACLES	200/1P	02
03	200/1P	GARAGE EXTERIOR RECEPTACLES	GARAGE WALL PACK	200/1P	04
05	200/1P	OVERHEAD DOOR OPERATOR	GARAGE SMOKE DETECTOR	200/1P	06
07	200/1P	GARAGE LIGHTS	P-0-U WATER HEATER	200/1P	08
09	200/1P			200/1P	10
11	200/1P			200/1P	12
13	200/1P			200/1P	14
15	200/1P			200/1P	16
17	200/1P			200/1P	18
19	200/1P			200/1P	20
21	200/1P			200/1P	22
23	200/1P			200/1P	24
25	200/1P			200/1P	26
27	200/1P			200/1P	28
29	200/1P			200/1P	30
31	200/1P			200/1P	32
33	200/2P			200/1P	34
35	200/1P			200/1P	36
37	200/1P			200/1P	38
39	200/1P			200/1P	40
41	200/1P			200/1P	42

PANELBOARD SCHEDULE

PANEL: P4 (2ND FL.)		LOCATION: SECOND FLOOR HALLWAY			
VOLTAGE: 120/240V		FEEDER: 3-5/0 THHN W/ #6 CU GND, 2" C.			
MAIN BUS: 125 AMP		FEATURES: AFCI BREAKERS FOR BEDROOM RECEPTACLES			
MAIN BREAKER: MLO		MOUNTING: SURFACE			
NO. OF POLES	SIZE/NO. OF POLES	TYPE OF LOAD	TYPE OF LOAD	SIZE/NO. OF POLES	NO.
01	200/1P	BEDROOM #1, NEW STUDY RECEPT.	BATH #1 GFI LIGHTS	200/1P	02
03	200/1P	BEDROOM #5 RECEPT.	BATH #2 GFI LIGHTS	200/1P	04
05	200/1P	BEDROOM #6 RECEPT.	SECOND FLOOR SMOKE DETECTORS	200/1P	06
07	200/1P	BEDROOM #1, #2, #3, #4 CEILING FANS	SECOND FLOOR CARBON MONOXIDE DETECTORS	200/1P	08
09	200/1P	BEDROOM #1, #2, #3, #4 CLOSET LIGHTS	STUDY, BEDROOM #5, #6 CEILING FANS	200/1P	10
11	200/1P	BEDROOM #5, #6 CLOSET LIGHTS		200/1P	12
13	200/1P			200/1P	14
15	200/1P			200/1P	16
17	200/1P			200/1P	18
19	200/1P			200/1P	20
21	200/1P			200/1P	22
23	200/1P			200/1P	24
25	200/1P			200/1P	26
27	200/1P			200/1P	28
29	200/1P			200/1P	30
31	200/1P			200/1P	32
33	200/1P			200/1P	34
35	200/1P			200/1P	36
37	200/1P			200/1P	38
39	200/1P			200/1P	40
41	200/1P			200/1P	42

PANELBOARD SCHEDULE

PANEL: P5 (3RD FL.)		LOCATION: THIRD FLOOR HALLWAY			
VOLTAGE: 120/240V		FEEDER: 3-5/0 THHN W/ #6 CU GND, 2" C.			
MAIN BUS: 125 AMP		FEATURES: AFCI BREAKERS FOR BEDROOM RECEPTACLES			
MAIN BREAKER: MLO		MOUNTING: SURFACE			
NO. OF POLES	SIZE/NO. OF POLES	TYPE OF LOAD	TYPE OF LOAD	SIZE/NO. OF POLES	NO.
01	200/1P	BEDROOM #7 RECEPT.		200/1P	02
03	200/1P	BATH #3 GFI LIGHTS		200/1P	04
05	200/1P	BATH #4 GFI LIGHTS	HALLWAY, BEDROOM #8 RECEPT.	200/1P	06
07	200/1P	BEDROOM #8 RECEPT.	ENLITE LIGHTS	200/1P	08
09	200/1P	BEDROOM #7 LIGHTS	ENLITE LIGHTS	200/1P	10
11	200/1P	THIRD FLOOR SMOKE DETECTORS	THIRD FLOOR CARBON MONOXIDE DETECTORS	200/1P	12
13	200/1P	BEDROOM #8, #9 LIGHTS	HALLWAY LIGHTS	200/1P	14
15	200/1P			200/1P	16
17	200/1P			200/1P	18
19	200/1P			200/1P	20
21	200/1P			200/1P	22
23	200/1P			200/1P	24
25	200/1P			200/1P	26
27	200/1P			200/1P	28
29	200/1P			200/1P	30
31	200/1P			200/1P	32
33	200/2P			200/1P	34
35	200/1P			200/1P	36
37	200/1P			200/1P	38
39	200/1P			200/1P	40
41	200/1P			200/1P	42

LOAD CALCULATIONS:

AIR CONDITIONING:	9 kW
SPACE HEATING:	20 kW
WATER HEATING:	1 kW
REFRIGERATION:	2 kW
COOKING:	1.4 kW
LIGHTING:	4 kW
MISC:	1.3 kW
MOTORS:	1 kW
TOTAL:	64 kW